



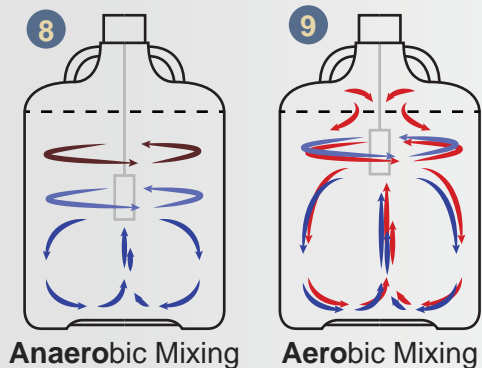
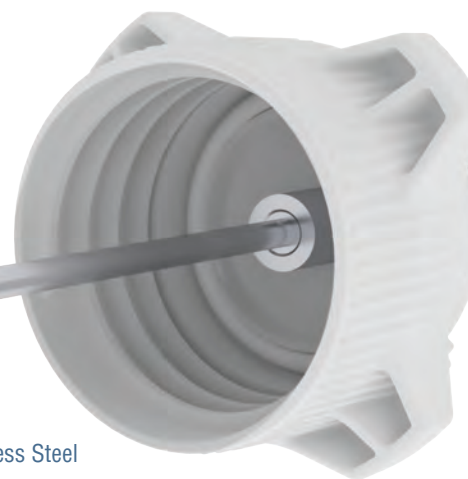
### Next Generation Mixing Technology from Foxx Life Sciences:

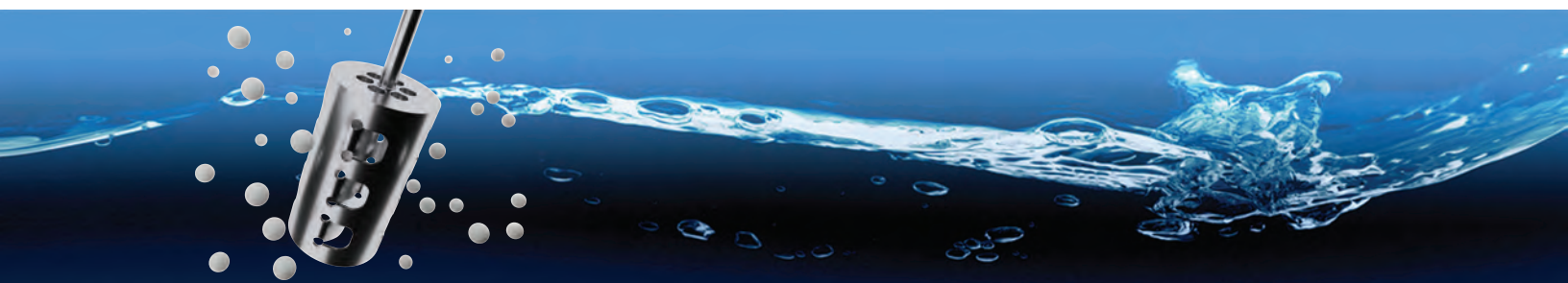
The Teras Turbine™ has four mixing modes: Top Anaerobic, Top Aerobic, Full Mixing, and Bottom Mixing. Top Anaerobic is ideal for mixing less viscous material at the top of the carboy or bottle. Top Aerobic is for adding air into the mixture within the carboy or bottle. Full Mixing is for simultaneously circulating fluid from top to center and bottom to center. Bottom Mixing is for lifting heavy or viscous materials at the bottom of the carboy or bottle. Mixing heads are available in 15mm, 25mm, 50mm, and 100mm sizes, and are made of autoclavable stainless steel.

- 1 Teras Turbine Mixing Head
- 2 Teras Turbine Shaft
- 3 Teras Turbine 1200RPM Motor



- 4 Made from high quality AISI 316 Stainless Steel
- 5 No external blades, reducing the risk of injury during cleaning
- 6 Due to the high quality finish, there is minimal surface turbulence during mixing resulting in higher energy efficiency
- 7 The patented Teras Turbine head provides excellent verticle and horizontal mixing to produce a "full mix"
- 8 Anaerobic heads are designed to mix solutions without introducing air bubbles into the solution
- 9 Aerobic heads and shafts are designed to provide full mixing while introducing and dispersing air throughout the solution
- 10 When paired with Foxx's line of EZgrip carboys, mixing results are uniform and homogenous with no dead spots





CAP	DESCRIPTION	PART NUMBER
	Teras Turbine Mixer Assembly, VersaCap 80 w/ Motor and Controller	400-0102-FLS
	Teras Turbine Mixer Assembly, VersaCap 120 w/ Motor and Controller	400-0103-FLS

SHAFT	LENGTH	MATERIAL	HOLLOW	SOLID	THREAD	PART NUMBER
	200mm	316 SS		✓	Male	400-0401-FLS
	300mm	316 SS		✓	Male	400-0402-FLS
	600mm	316 SS		✓	Male	400-0403-FLS
	200mm	316 SS	✓		Male	400-0404-FLS
	300mm	316 SS	✓		Male	400-0405-FLS
	600mm	316 SS	✓		Male	400-0406-FLS

MIXING HEAD	SIZE	MATERIAL	BOTTOM	MIXING STYLE	MIXING VOLUME	PART NUMBER
	15mm	316 SS	Open	Anaerobic	0 - 5L	400-0301-FLS
	25mm	316 SS	Open	Anaerobic	1L - 15L	400-0305-FLS
	25mm	316 SS	Open	Aerobic / Full Mix	1L - 15L	400-0307-FLS
	50mm	316 SS	Open	Anaerobic	10L - 60L	400-0309-FLS
	50mm	316 SS	Reduced Inlet	Anaerobic	10L - 60L	400-0310-FLS
	50mm	316 SS	Open	Aerobic / Full Mix	10L - 60L	400-0311-FLS
	50mm	316 SS	Reduced Inlet	Aerobic / Full Mix	10L - 60L	400-0312-FLS
	100mm	316 SS	Open	Anaerobic	30L - 100L <sup>1</sup>	400-0313-FLS
	100mm	316 SS	Reduced Inlet	Anaerobic	30L - 100L <sup>1</sup>	400-0314-FLS
	100mm	316 SS	Open	Aerobic / Full Mix	30L - 100L <sup>1</sup>	400-0315-FLS
	100mm	316 SS	Reduced Inlet	Aerobic / Full Mix	30L - 100L <sup>1</sup>	400-0316-FLS

<sup>1</sup> Depending upon application, the larger Teras Turbine motor can sufficiently mix larger volumes.

ACCESSORIES	DESCRIPTION	PART NUMBER
	Teras Turbine Mixer Motor w/ Controller, 1200RPM	400-0201-FLS
	Teras Turbine, Connector, Rod, Teras Turbine Mixer Shaft to Motor	400-0501-FLS
	Teras Turbine, Connector, Electrical, Cable, Male	400-0601-FLS
	Teras Turbine, Connector, Electrical, Cable, Female	400-0602-FLS
	Teras Turbine, Adapter, Gas Mix	400-0701-FLS
	Teras Turbine, Mixing Stand	400-0901-FLS



\* Must order a cap assembly, shaft, mixing head, and connector to create a complete system.

Rev. 40-001-02  
05/23/2016

Foxx Life Sciences, 6 Delaware Drive, Salem, NH 03079  
www.foxxlifesciences.com Order Now: 1 (603) 890-FOXX (3699)

**novatech**  
INTERNATIONAL

sales@novatech-usa.com  
www.novatech-usa.com

Tel: (866) 433-6682 Fax: (866) 433-6684  
Tel: (281) 359-8538 Fax: (281) 359-0084