

PULSAFEEDER®

Systems & Accessories



Product

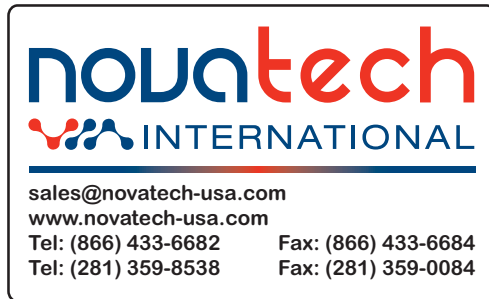
Effective 01/01/18

Table of Contents

Systems	
Table of Contents	4
Pump Accessories	
Table of Contents	13
Controller Accessories	
Table of Contents	25

IMPORTANT INFORMATION WHEN PLACING AN ORDER

1. Fax, mail or telephone orders directly to the Customer Service Department:



2. Please have the following information available when placing an order:

Account Name	Special Tags or Marks (if needed)
Billing Zip Code	Item(s) Being Ordered
Purchase Order Number	Quantity of Each Item
Ship to Address	Pricing
Payment Terms	Shipping Information
3. Orders are entered upon receipt. Our ability to change in house orders is limited. Please be certain your orders are complete when placed. Any order cancellation or change request is subject to a cancellation fee.
4. Orders are assigned standard lead times based on the size of the order and product mix:
Orders requiring expedited shipping (sooner than the standard lead times) are subject to a expedite charge. Unless the order clearly requests expedited shipping, the order will be treated as a routine order. When expedited shipping is requested a designated carrier must be selected. Orders that need to ship the same day must be received by 12:00 PM EST. Same day and next working day shipping is generally available for larger orders but not guaranteed, please verify with customer service. We shall have no liability if unable to provide expedited shipping of an order
5. Repairs and returns are coordinated through our Customer Service Department. All orders returned must have factory authorization, and are subject to a 25% restocking charge for standard product.
6. Other Important Information:
 - Prices are subject to change without notice, and are effective when order is accepted, and acknowledged at point of shipment.
 - When ordering, specify your P.O. number, model number, quantity, price, shipping and/or billing address and order date.
 - Standard terms are NET 30 days from date of invoice for approved accounts on open account.
 - WE ACCEPT VISA, MASTERCARD, AMERICAN EXPRESS and DISCOVER CARD.
 - All prices are F.C.A. Punta Gorda, FL or Kingwood, Texas location.
 - Custom product sales are final.
 - Charges for export documentation may apply an very by requirements.
 - Expedite fees may apply. Orders requiring expedited shipping (sooner than the standard lead times) are subject to an expedite charge.
 - Fees for changes to or cancellation of orders may apply.

Systems

Table of Contents

PULSAblend Polymer Makedown Systems	6-7
Pre-Engineered Systems	8-11
Digital Glycol Feeders	12





Polymer Makedown Systems

for Electronic Metering Pumps

Turn-Key Packages for Water Clarification Applications

The Pulsafeeder PULSAblend Polymer Makedown Systems feature a Proprietary Static Blending System which provides excellent dilution without harming the polymer chains. These rugged fabricated assemblies offer turn-key simplicity and industrial-grade durability.

The UV-stabilized, high-grade HDPE frame is lightweight, corrosion resistant and offers structural rigidity.

Each system is factory assembled and hydrostatically tested prior to shipment.



Polymer Makedown Injection Guide

Water Flow Rate (GPM)	Neat Polymer Injection Pump Flow Rate (GPH) to Reach Percent Makedown																			
	0.2%	0.4%	0.6%	0.8%	1.0%	1.2%	1.4%	1.6%	1.8%	2.0%	2.2%	2.4%	2.6%	2.8%	3.0%	3.2%	3.4%	3.6%	3.8%	4.0%
0.2	0.02	0.05	0.07	0.10	0.12	0.14	0.17	0.19	0.22	0.24	0.26	0.29	0.31	0.34	0.36	0.38	0.41	0.43	0.46	0.48
0.4	0.05	0.10	0.14	0.19	0.24	0.29	0.34	0.38	0.43	0.48	0.53	0.58	0.62	0.67	0.72	0.77	0.82	0.86	0.91	0.96
0.6	0.07	0.14	0.22	0.29	0.36	0.43	0.50	0.58	0.65	0.72	0.79	0.86	0.94	1.01	1.08	1.15	1.22	1.30	1.37	1.44
0.8	0.10	0.19	0.29	0.38	0.48	0.58	0.67	0.77	0.86	0.96	1.06	1.15	1.25	1.34	1.44	1.54	1.63	1.73	1.82	1.92
1.0	0.12	0.24	0.36	0.48	0.60	0.72	0.84	0.96	1.08	1.20	1.32	1.44	1.56	1.68	1.80	1.92	2.04	2.16	2.28	2.40
1.2	0.14	0.29	0.43	0.58	0.72	0.86	1.01	1.15	1.30	1.44	1.58	1.73	1.87	2.02	2.16	2.30	2.45	2.59	2.74	2.88
1.4	0.17	0.34	0.50	0.67	0.84	1.01	1.18	1.34	1.51	1.68	1.85	2.02	2.18	2.35	2.52	2.69	2.86	3.02	3.19	3.36
1.6	0.19	0.38	0.58	0.77	0.96	1.15	1.34	1.54	1.73	1.92	2.11	2.30	2.50	2.69	2.88	3.07	3.26	3.46	3.65	3.84
1.8	0.22	0.43	0.65	0.86	1.08	1.30	1.51	1.73	1.94	2.16	2.38	2.59	2.81	3.02	3.24	3.46	3.67	3.89	4.10	4.32
2.0	0.24	0.48	0.72	0.96	1.20	1.44	1.68	1.92	2.16	2.40	2.64	2.88	3.12	3.36	3.60	3.84	4.08	4.32	4.56	4.80
2.2	0.26	0.53	0.79	1.06	1.32	1.58	1.85	2.11	2.38	2.64	2.90	3.17	3.43	3.70	3.96	4.22	4.49	4.75	5.02	5.28
2.4	0.29	0.58	0.86	1.15	1.44	1.73	2.02	2.30	2.59	2.88	3.17	3.46	3.74	4.03	4.32	4.61	4.90	5.18	5.47	5.76
2.6	0.31	0.62	0.94	1.25	1.56	1.87	2.18	2.50	2.81	3.12	3.43	3.74	4.06	4.37	4.68	4.99	5.30	5.62	5.93	6.24
2.8	0.34	0.67	1.01	1.34	1.68	2.02	2.35	2.69	3.02	3.36	3.70	4.03	4.37	4.70	5.04	5.38	5.71	6.05	6.38	6.72
3.0	0.36	0.72	1.08	1.44	1.80	2.16	2.52	2.88	3.24	3.60	3.96	4.32	4.68	5.04	5.40	5.76	6.12	6.48	6.84	7.20
3.2	0.38	0.77	1.15	1.54	1.92	2.30	2.69	3.07	3.46	3.84	4.22	4.61	4.99	5.38	5.76	6.14	6.53	6.91	7.30	7.68
3.4	0.41	0.82	1.22	1.63	2.04	2.45	2.86	3.26	3.67	4.08	4.49	4.90	5.30	5.71	6.12	6.53	6.94	7.34	7.75	8.16
3.6	0.43	0.86	1.30	1.73	2.16	2.59	3.02	3.46	3.89	4.32	4.75	5.18	5.62	6.05	6.48	6.91	7.34	7.78	8.21	8.64
3.8	0.46	0.91	1.37	1.82	2.28	2.74	3.19	3.65	4.10	4.56	5.02	5.47	5.93	6.38	6.84	7.30	7.75	8.21	8.66	9.12
4.0	0.48	0.96	1.44	1.92	2.40	2.88	3.36	3.84	4.32	4.80	5.28	5.76	6.24	6.72	7.20	7.68	8.16	8.64	9.12	9.60
4.2	0.50	1.01	1.51	2.02	2.52	3.02	3.53	4.03	4.54	5.04	5.54	6.05	6.55	7.06	7.56	8.06	8.57	9.07	9.58	10.08
4.4	0.53	1.06	1.58	2.11	2.64	3.17	3.70	4.22	4.75	5.28	5.81	6.34	6.86	7.39	7.92	8.45	8.98	9.50	10.03	10.56
4.6	0.55	1.10	1.66	2.21	2.76	3.31	3.86	4.42	4.97	5.52	6.07	6.62	7.18	7.73	8.28	8.83	9.38	9.94	10.49	11.04
4.8	0.58	1.15	1.73	2.30	2.88	3.46	4.03	4.61	5.18	5.76	6.34	6.91	7.49	8.06	8.64	9.22	9.79	10.37	10.94	11.52
5.0	0.60	1.20	1.80	2.40	3.00	3.60	4.20	4.80	5.40	6.00	6.60	7.20	7.80	8.40	9.00	9.60	10.20	10.80	11.40	12.00
5.2	0.62	1.25	1.87	2.50	3.12	3.74	4.37	4.99	5.62	6.24	6.86	7.49	8.11	8.74	9.36	9.98	10.61	11.23	11.86	12.48
5.4	0.65	1.30	1.94	2.59	3.24	3.89	4.54	5.18	5.83	6.48	7.13	7.78	8.42	9.07	9.72	10.37	11.02	11.66	12.31	12.96
5.6	0.67	1.34	2.02	2.69	3.36	4.03	4.70	5.38	6.05	6.72	7.39	8.06	8.74	9.41	10.08	10.75	11.42	12.10	12.77	13.44
5.8	0.70	1.39	2.09	2.78	3.48	4.18	4.87	5.57	6.26	6.96	7.66	8.35	9.05	9.74	10.44	11.14	11.83	12.53	13.22	13.92
6.0	0.72	1.44	2.16	2.88	3.60	4.32	5.04	5.76	6.48	7.20	7.92	8.64	9.36	10.08	10.80	11.52	12.24	12.96	13.68	14.40
6.2	0.74	1.49	2.23	2.98	3.72	4.46	5.21	5.95	6.70	7.44	8.18	8.93	9.67	10.42	11.16	11.90	12.65	13.39	14.14	14.88
6.4	0.77	1.54	2.30	3.07	3.84	4.61	5.38	6.14	6.91	7.68	8.45	9.22	9.98	10.75	11.52	12.29	13.06	13.82	14.59	15.36
6.6	0.79	1.58	2.38	3.17	3.96	4.75	5.54	6.34	7.13	7.92	8.71	9.50	10.30	11.09	11.88	12.67	13.46	14.26	15.05	15.84
6.8	0.82	1.63	2.45	3.26	4.08	4.90	5.71	6.53	7.34	8.16	8.98	9.79	10.61	11.42	12.24	13.06	13.87	14.69	15.50	16.32
7.0	0.84	1.68	2.52	3.36	4.20	5.04	5.88	6.72	7.56	8.40	9.24	10.08	10.92	11.76	12.60	13.44	14.28	15.12	15.96	16.80
7.2	0.86	1.73	2.59	3.46	4.32	5.18	6.05	6.91	7.78	8.64	9.50	10.37	11.23	12.10	12.96	13.82	14.69	15.55	16.42	17.28
7.4	0.89	1.78	2.66	3.55	4.44	5.33	6.22	7.10	7.99	8.88	9.77	10.66	11.54	12.43	13.32	14.21	15.10	15.98	16.87	17.76
7.6	0.91	1.82	2.74	3.65	4.56	5.47	6.38	7.30	8.21	9.12	10.03	10.94	11.86	12.77	13.68	14.59	15.50	16.42	17.33	18.24
7.8	0.94	1.87	2.81	3.74	4.68	5.62	6.55	7.49	8.42	9.36	10.30	11.23	12.17	13.10	14.04	14.98	15.91	16.85	17.78	18.72
8.0	0.96	1.92	2.88	3.84	4.80	5.76	6.72	7.68	8.64	9.60	10.56	11.52	12.48	13.44	14.40	15.36	16.32	17.28	18.24	19.20
8.2	0.98	1.97	2.95	3.94	4.92	5.90	6.89	7.87	8.86	9.84	10.82	11.81	12.79	13.78	14.76	15.74	16.73	17.71	18.70	19.68
8.4	1.01	2.02	3.02	4.03	5.04	6.05	7.06	8.06	9.07	10.08	11.09	12.10	13.10	14.11	15.12	16.13	17.14	18.14	19.15	20.16
8.6	1.03	2.06	3.10	4.13	5.16	6.19	7.22	8.26	9.29	10.32	11.35	12.38	13.42	14.45	15.48	16.51	17.54	18.58	19.61	20.64
8.8	1.06	2.11	3.17	4.22	5.28	6.34	7.39	8.45	9.50	10.56	11.62	12.67	13.73	14.78	15.84	16.90	17.95	19.01	20.06	21.12
9.0	1.08	2.16	3.24	4.32	5.40	6.48	7.56	8.64	9.72	10.80	11.88	12.96	14.04	15.12	16.20	17.28	18.36	19.44	20.52	21.60
9.2	1.10	2.21	3.31	4.42	5.52	6.62	7.73	8.83	9.94	11.04	12.14	13.25	14.35	15.46	16.56	17.66	18.77	19.87	20.98	22.08
9.4	1.13	2.26	3.38	4.51	5.64	6.77	7.90	9.02	10.15	11.28	12.41	13.54	14.66	15.79	16.92	18.05	19.18	20.30	21.43	22.56
9.6	1.15	2.30	3.46	4.61	5.76	6.91	8.06	9.22	10.37	11.52	12.67	13.82	14.98	16.13	17.28	18.43	19.58	20.74	21.89	23.04
9.8	1.176	2.352	3.528	4.704	5.88	7.056	8.232	9.408	10.584	11.76	12.936	14.112	15.288	16.464	17.64	18.816	19.992	21.168	22.344	23.52
10.0	1.2	2.4	3.6	4.8	6	7.2	8.4	9.6	10.8	12	13.2	14.4	15.6	16.8	18	19.2	20.4	21.6	22.8	24

Guide	LVB3	LVF4	LVG4	LVG5	LVB7	Not Covered by HV Pumps
-------	------	------	------	------	------	-------------------------



Automatic PLC Control							
Part Number	Neat Polymer Injection Pump	Incoming Water Flow	Pressure Regulator	Tank ¹	Tank Mixer	Multi Point Level Control ²	Description
PESMAAVSD8FC-XXX	0.50 GPH - LVB3 - 150 PSI Max	0 - 5 GPM	Yes	85 Gallon	Propeller Mixer ⁴	Yes	Standard
PESMAEVS9WC-XXX	10.0 GPH - LVH7 - 80 PSI Max	5 - 10 GPM	No	110 Gallon	Paddlewheel Mixer ³	Yes	Standard
PESMANVSD3FC-XXX	Non-standard: See order for details	0 - 5 GPM	Yes	30 Gallon	Propeller Mixer ⁴	Yes	Standard
PESMANVSE8FC-XXX	Non-standard: See order for details	5 - 10 GPM	Yes	85 Gallon	Propeller Mixer ⁴	Yes	Standard

1. Conical Bottom with Stand

2. Multi-Point Level Control Sized to Tank Option

3. VFD Motor (45-135 RPM)

4. 90 RPM Fixed Speed Motor

Manual Control						
Part Number	Neat Polymer Injection Pump	Incoming Water Flow	Pressure Regulator	Tank	Tank Mixer	Options
PESMCAVSADNN-XXX	0.50 GPH - LVB3 - 150 PSI Max	0 - 5 GPM	No	Direct Feed	No	Standard
PESMCAVSDDNN-XXX	0.50 GPH - LVB3 - 150 PSI Max	0 - 5 GPM	Yes	Direct Feed	No	Standard
PESMCBVSADNN-XXX	1.00 GPH - LVF4 - 150 PSI Max	0 - 5 GPM	No	Direct Feed	No	Standard
PESMCCVSADNN-XXX	2.00 GPH - LVG4 - 110 PSI Max	0 - 5 GPM	No	Direct Feed	No	Standard
PESMCNVSDNN-XXX	Non-standard: See order for details	0 - 5 GPM	Yes	Direct Feed	No	Standard
PESMCNVSEDNN-XXX	Non-standard: See order for details	5 - 10 GPM	Yes	Direct Feed	No	Standard

Dry Contact Control						
Part Number	Neat Polymer Injection Pump	Incoming Water Flow	Pressure Regulator	Tank ¹	Tank Mixer	Options
PESMEAVSADNN-XXX	0.50 GPH - LVB3 - 150 PSI Max	0 - 5 GPM	No	Direct Feed	No	Standard
PESMEAVSCDNN-FSW	0.50 GPH - LVB3 - 150 PSI Max	10+ GPM	No	Direct Feed	No	Incoming Water Low Flow Cutoff Switch
PESMECVSADNN-FSW	2.00 GPH - LVG4 - 110 PSI Max	0 - 5 GPM	No	Direct Feed	No	Incoming Water Low Flow Cutoff Switch
PESMECVSADNN-XXX	2.00 GPH - LVG4 - 110 PSI Max	0 - 5 GPM	No	Direct Feed	No	Standard
PESMECVSD1NN-FSW	2.00 GPH - LVG4 - 110 PSI Max	0 - 5 GPM	Yes	15 Gallon	No	Incoming Water Low Flow Cutoff Switch
PESMEDVSADNN-XXX	4.00 GPH - LVG5 - 110 PSI Max	0 - 5 GPM	No	Direct Feed	No	Standard
PESMEDVSDDNN-FSW	4.00 GPH - LVG5 - 110 PSI Max	0 - 5 GPM	Yes	Direct Feed	No	Incoming Water Low Flow Cutoff Switch
PESMEVSDNN-XXX	10.00 GPH - LVH7 - 80 PSI Max	5 - 10 GPM	No	Direct Feed	No	Standard
PESMENVSDDNN-XXX	Non-standard: See order for details	0 - 5 GPM	Yes	Direct Feed	No	Standard
PESMENVSEDNN-XXX	Non-standard: See order for details	5 - 10 GPM	Yes	Direct Feed	No	Standard

Elastomer: Viton O-rings and Seats
 For 230V Contact Factory

Pre-Engineered Systems

Systems Pre-Engineered Solutions

for Electronic Metering Pumps

Turn-Key Packages for Metering Applications

Pulsafeeder's Pre-Engineered Systems are designed to provide complete chemical feed solutions for all electronic metering applications. From stand alone simplex pH control applications to full-featured, redundant sodium hypochlorite disinfection metering, these rugged fabricated assemblies offer turn-key simplicity and industrial-grade durability.

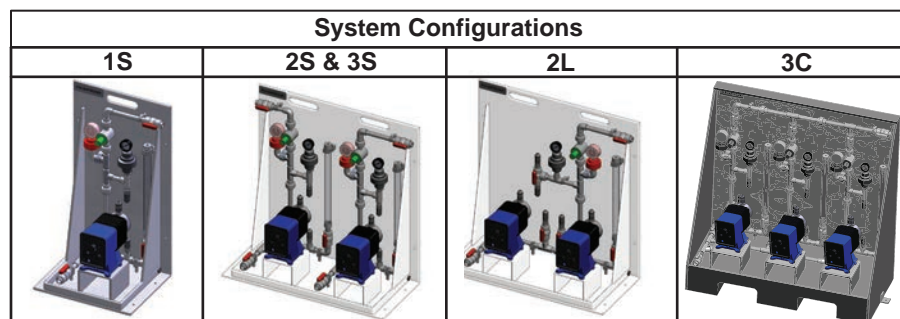
The UV-stabilized, high-grade HDPE frame offers maximum chemical compatibility and structural rigidity.

Each system is factory assembled and hydrostatically tested prior to shipment.

Pre-Engineered Systems for PulsaTron metering pumps include a compact, rugged High Density Polyethylene frame providing structure for a single or dual metering pumps and inlet and discharge piping assemblies with full 1" drip rim perimeter. The piping assemblies utilize Schedule 80 piping, isolation ball valves and unions throughout. The inlet piping assembly includes a clear Y-strainer and calibration column for easy maintenance and measurement. The discharge piping assemblies incorporate pulsation dampeners, pressure gauge with isolator and discrete back pressure and pressure-relief valves.



System Configurations



System Part Number	No. of Pumps	Maximum Pressure	Nominal Thickness	Containment Lip	Nominal Pipe Size	Inlet Valve	Y-Strainer	Calibration Column *	Pulsation Dampener	Pressure Gauge	Back Pressure Valve	Pressure Relief Valve	Interconnected Piping	Discharge Valve	3 Way Pump Select Valve	Height	Width	Depth	Approx. Wt (no Pumps & Plastic Pipe)	Approx. Wt (no Pumps & SS Pipe)
PES1S	1	150 psi	1/2"	✓	1/2"	1	1	1	1	1	1	1		1		36"	20"	16"	32 lbs	38 lbs
PES2S	2	150 psi	1/2"	✓	1/2"	2	2	2	2	2	2	2		2		36"	36"	16"	62 lbs	70 lbs
PES3S	3	150 psi	1/2"	✓	1/2"	3	3	3	3	3	3	3		3		42"	46"	21.5"	100 lbs.	112 lbs
PES2C	2	150 psi	1/2"	✓	1/2"	1	1	2	2	2	2	2	✓	1		36"	36"	16"	62 lbs	70 lbs
PES3C	3	150 psi	1/2"	✓	1/2"	1	1	3	3	3	3	3	✓	1		42"	46"	21.5"	100 lbs.	112 lbs.
PES2L	2	150 psi	1/2"	✓	1/2"	1	1	1	1	1	1	1	✓	2		36"	36"	16"	65 lbs	72 lbs

* Note: Calibration column size is 200mL on standard systems and 1000mL on HF systems.

Single Pump, Standard System

Model Number	Nominal Elastomer for Components	Auto Fill Calibration Column	Description
PES1S-VCF	Viton	PVC	Standard
PES1S-VHFCF	Viton	PVC	High Flow, Required for H7, J7, K7 & H8 Pumps
PES1S-ECF	EPDM	PVC	Standard
PES1S-EHFCF	EPDM	PVC	High Flow, Required for H7, J7, K7 & H8 Pumps
PES1S-VKCF	Viton	Kynar	Standard
PES1S-VHFKCF	Viton	Kynar	High Flow, Required for H7, J7, K7 & H8 Pumps
PES1S-EKCF	EPDM	Kynar	Standard
PES1S-EHFKCF	EPDM	Kynar	High Flow, Required for H7, J7, K7 & H8 Pumps

Dual Pump, Redundant Piping, Not Connected			
Model Number	Nominal Elastomer for Components	Auto Fill Calibration Column	Description
PES2S-VCF	Viton	PVC	Standard
PES2S-VHFCF	Viton	PVC	High Flow, Required for H7, J7, K7 & H8 Pumps
PES2S-ECF	EPDM	PVC	Standard
PES2S-EHFCF	EPDM	PVC	High Flow, Required for H7, J7, K7 & H8 Pumps
PES2S-VKCF	Viton	Kynar	Standard
PES2S-VHFKCF	Viton	Kynar	High Flow, Required for H7, J7, K7 & H8 Pumps
PES2S-EKCF	EPDM	Kynar	Standard
PES2S-EHFKCF	EPDM	Kynar	High Flow, Required for H7, J7, K7 & H8 Pumps
Dual Pump, Redundant Piping, Connected, Common S & D			
Model Number	Nominal Elastomer for Components	Auto Fill Calibration Column	Description
PES2C-VCF	Viton	PVC	Standard
PES2C-VHFCF	Viton	PVC	High Flow, Required for H7, J7, K7 & H8 Pumps
PES2C-ECF	EPDM	PVC	Standard
PES2C-EHFCF	EPDM	PVC	High Flow, Required for H7, J7, K7 & H8 Pumps
PES2C-VKCF	Viton	Kynar	Standard
PES2C-VHFKCF	Viton	Kynar	High Flow, Required for H7, J7, K7 & H8 Pumps
PES2C-EKCF	EPDM	Kynar	Standard
PES2C-EHFKCF	EPDM	Kynar	High Flow, Required for H7, J7, K7 & H8 Pumps
Dual Pump, Lead/Backup, Single Pipe System			
Model Number	Nominal Elastomer for Components	Auto Fill Calibration Column	Description
PES2L-VHFCF	Viton	PVC	High Flow, Required for H7, J7, K7 & H8 Pumps
PES2L-ECF	EPDM	PVC	Standard
PES2L-EHFCF	EPDM	PVC	High Flow, Required for H7, J7, K7 & H8 Pumps
PES2L-VKCF	Viton	Kynar	Standard
PES2L-VHFKCF	Viton	Kynar	High Flow, Required for H7, J7, K7 & H8 Pumps
PES2L-EKCF	EPDM	Kynar	Standard
PES2L-EHFKCF	EPDM	Kynar	High Flow, Required for H7, J7, K7 & H8 Pumps

Three Pump, Redundant Piping, Not Connected			
Model Number	Nominal Elastomer for Components	Auto Fill Calibration Column	Description
PES3S-VHFCF	Viton	PVC	High Flow, Required for H7, J7, K7 & H8 Pumps
PES3S-ECF	EPDM	PVC	Standard
PES3S-EHFCF	EPDM	Kynar	High Flow, Required for H7, J7, K7 & H8 Pumps
PES3S-VKCF	Viton	Kynar	Standard
PES3S-VHFKCF	Viton	Kynar	High Flow, Required for H7, J7, K7 & H8 Pumps
PES3S-EKCF	EPDM	PVC	Standard
PES3S-EHFKCF	EPDM	PVC	High Flow, Required for H7, J7, K7 & H8 Pumps
Three Pump, Redundant Piping, Connected, Common S & D			
Model Number	Nominal Elastomer for Components	Auto Fill Calibration Column	Description
PES3C-VCF	Viton	PVC	Standard
PES3C-VHFCF	Viton	PVC	High Flow, Required for H7, J7, K7 & H8 Pumps
PES3C-ECF	EPDM	PVC	Standard
PES3C-EHFCF	EPDM	Kynar	High Flow, Required for H7, J7, K7 & H8 Pumps
PES3C-VKCF	Viton	Kynar	Standard
PES3C-VHFKCF	Viton	Kynar	High Flow, Required for H7, J7, K7 & H8 Pumps
PES3C-EKCF	EPDM	PVC	Standard
PES3C-EHFKCF	EPDM	PVC	High Flow, Required for H7, J7, K7 & H8 Pumps

Conduit Box for Power & Signal On All Models

Pre-Engineered Systems

Pre-Engineered Systems for BLACKLINE Pumps

Pulsafeeder's Pre-Engineered Systems are designed to provide complete chemical feed solutions for a wide range of metering applications. From stand alone pH control applications to full-featured, sodium hypochlorite disinfection metering. These rugged fabricated assemblies offer installation simplicity and industrial-grade durability.

The UV-stabilized, high-grade HDPE frame offers maximum chemical compatibility and structural rigidity.

Each system is factory assembled and hydrostatically tested prior to shipment.

Pre-Engineered Systems for BLACKLINE metering pumps include single or dual metering pump configurations with inlet and discharge piping assemblies available in both 1/2" and 1" sizes. The piping assemblies utilize Schedule 80 PVC or UHP PVDF piping. Every system includes ball valves and unions throughout, suction side Y-strainers and calibration columns. The discharge piping assemblies incorporate pulsation dampeners, pressure gauge with isolators, and discrete back pressure and pressure-relief valves



Key Features

Pre-Configured System: Rigid frame with pre-plumbed piping assemblies; schedule 80 PVC or UHP PVDF piping.

Easy to Install and Operate: All of the most common metering pump accessories are included.

Mounting flexibility: The rigid 1/2" frame incorporates mounting holes and brackets for anchoring to the floor.

Quick Delivery: Systems available within 2 weeks of order!

System Configurations		
1S	2S	2L

Applications

Municipal Water: Disinfection systems with Sodium Hypochlorite, pH Adjustment, Fluoride addition.

Municipal Wastewater: Fume Scrubbers, General Odor Control, pH adjustment, Residual Disinfectant Management

Food & Beverage: Clean-In-Place, Clean-Off-Line, Sterilizer Water Treatment

Institutional: Cooling Tower Water Treatment, Boiler Water Treatment, Closed Loop Systems

System Part Number	Nominal Pipe Size	Pump Mounts	Maximum Pressure	Containment Lip	Inlet Valve	Y-Strainer	Calibration Column *	Pulsation Dampener	Pressure Gauge	Back Pressure Valve	Pressure Relief Valve	Interconnected Piping	Discharge Valve	3 Way Pump Select Valve	Height inch	Width inch	Depth inch	Approx. Wt (no Pumps)
PES1S	1/2"	1	150 psi	✓	1	1	1	1	1	1	1		1		47	21	24	79
PES2S	1/2"	2	150 psi	✓	2	2	2	2	2	2	2		2		47	42	24	128
PES2L	1/2"	2	150 psi	✓	1	1	1	1	1	1	1	✓	2	✓	47	42	24	111
PES1S	1"	1	150 psi	✓	1	1	1	1	1	1	1		1		63	25	29	127
PES2S	1"	2	150 psi	✓	2	2	2	2	2	2	2		2		63	49	29	210
PES2L	1"	2	150 psi	✓	1	1	1	1	1	1	1	✓	2	✓	63	49	29	179

* Note: Calibration column size is 1000mL on standard systems and 4000mL on HF systems.

Single Pump, Standard System For BLACKLINE Pump			
Model Number	Nominal Elastomer for Components	Piping	Description
PES1S-VBLA	Viton	PVC ½"	Flow up to 35 gph
PES1S-VKBLA	Viton	PVDF ½"	Flow up to 35 gph
PES1S-EBLA	EPDM	PVC ½"	Flow up to 35 gph
PES1S-VBLHF	Viton	PVC 1"	High Flow, up to 132 gph
PES1S-VKBLHF	Viton	PVDF 1"	High Flow, up to 132 gph
PES1S-EBLHF	EPDM	PVC 1"	High Flow up to 132 gph
Dual Pump, Redundant Piping, Not Connected For BLACKLINE Pumps			
Model Number	Nominal Elastomer for Components	Description	Description
PES2S-VBLA	Viton	PVC ½"	Flow up to 35 gph
PES2S-VKBLA	Viton	PVDF ½"	Flow up to 35 gph
PES2S-EBLA	EPDM	PVC ½"	Flow up to 35 gph
PES2S-VBLHF	Viton	PVC 1"	High Flow, up to 132 gph
PES2S-VKBLHF	Viton	PVDF 1"	High Flow up to 132 gph
PES2S-EBLHF	EPDM	PVC 1"	High Flow up to 132 gph
Dual Pump, Lead/Backup, Single Pipe System For BLACKLINE Pumps			
Model Number	Nominal Elastomer for Components	Description	Description
PES2L-VBLA	Viton	PVC ½"	Flow up to 35 gph
PES2L-VKBLA	Viton	PVDF ½"	Flow up to 35 gph
PES2L-EBLA	EPDM	PVC ½"	Flow up to 35 gph
PES2L-VBLHF	Viton	PVC 1"	High Flow, up to 132 gph
PES2L-VKBLHF	Viton	PVDF 1"	High Flow, up to 132 gph
PES2L-EBLHF	EPDM	PVC 1"	High Flow up to 132 gph

Digital Glycol Feeders

Pulsafeeder's Digital Glycol Feeder provides a consistent operating pressure in closed loop systems. This allows a controlled percentage of glycol solution to be fed from the 55 gallon tank. The Digital Glycol Feeder is available in two models; the DGF1 for single loop and the DGF2 for dual loop systems. The control unit utilizes an 8-bit microcontroller for precise feed system control. The NEMA4X enclosure can be wired conduit or prewire for easy startup. The pre-plumbed assembly includes a pressure gauge, pressure switch, and pressure relief valve to prevent excessive pressure build up. A low liquid level switch with optional audible alarm prevents the gear pump from operating when the solution is low.

Each Digital Glycol Feeder is fully piped and wired with the following components:

Suction Assembly includes:

- Schedule 80 PVC tubing and fittings
- PVC ball valve
- Clear poly bowl strainer

Discharge Assembly Includes:

- Schedule 80 PVC pipe and fittings
- PVC ball valve
- PVC check valve
- Pressure gauge
- Brass relief valve with return to tank tubing



DIGITAL GLYCOL FEEDER Selection Guide									
CLOSED LOOPS Position 4		1 = Single Loop 2 = Dual Loop	DGF_	-	-	-	-	-	-
CONDUIT / PREWIRE Position 5		A = Conduit B = Prewire							
AUDIBLE ALARM Position 6		A = without Audible Alarm B = with Audible Alarm							
ALARM OUTPUT OPTION Position 7		X = None A = Dry Contact, Single B = Dry Contact, Dual C = AC Output, Single D = AC Output, Dual E = Dry Contact, Single & AC Output, Single							
PRESSURE SWITCH OPTION Position 8		A = Standard pressure switch, 30 to 50 psi (adjustable to 80 psi) B = Low pressure switch, 5 to 10 psi (adjustable to 35 psi) C = One standard and one low pressure switch (DGF2 only)							
PUMP AND VOLTAGE RATING Position 9		A = 115VAC no pump C = 115VAC 60Hz 1.50GPM @ 100psi E = 115VAC 60Hz 3.75GPM @ 100 psi							
AGENCY APPROVAL Position 10		X = None							
PANEL ASSEMBLY Position 11		B = Assembled (must ship via freight)							

Pump Accessories

Table of Contents

Pulsation Dampeners	14
Water Meters - Multi-Jet Meters & Turbine Meters	15
Mixers - Bracket Mount, Thread Mount, Flange Mount	16
Solution Tanks - Light Duty, Heavy Duty & Industrial	17
Double Wall Containment Tank	17
Integrated Tank Systems	18
Tank, Stand & Feed Pump Tank Systems	18
PVC Tank Accessories	18
Spill Containment - One, Two & Four Drum	18
Spill Containment Accessories	18
Pump Containment Shelf	19
Static In-line Mixer	19
Bulkhead Fitting Assemblies	19
Visual Flow Meter	19
Liquid Level Wand	20
Flow Controller	20
Pressure Relief Valve	20
Back Pressure Valve	20
PULSAtron 1" Flow Meters	21
Flow Indicator	21
Tube Shield	21
Strainer Assembly	21
Calibration Kits & Columns	22
Five Function Valve	22
Five Function Degas Valve	22
6" Injectors	23
In-line Anti-Siphon Valve	23
Tubing - 100 Foot Rolls	23
Wall Mounting Bracket - Side Mount Bracket & Forward Mount Bracket	23
Corporation Stop	24
Pressure Gauge	24

Pulsation Dampeners

Pulsafeeder's Pulsation Dampeners improve pump system efficiency by removing pulsating flows from positive displacement pumps, insuring a smooth and continuous fluid flow and metering accuracy, eliminating pipe vibration and protecting gaskets and seals. The result is a longer lasting safer system.



150 PSI Pulsation Dampeners - Chargeable				
Volume	Body	Bladder	Connection	Part Number
10 cubic inches	POLY	EPDM	3/8" FNPT	NA601038-FPPE
		CSPE	3/8" FNPT	NA601038-FPPC
		TFE	3/8" FNPT	NA601038-FPPT
		Viton	3/8" FNPT	NA601038-FPPV
		CSPE	1/2" FNPT	NA601050-FPPC
		TFE	1/2" FNPT	NA601050-FPPT
	PVC	Viton	1/2" FNPT	NA601050-FPPV
		CSPE	1/2" FNPT	NA601050-PVCC
		TFE	1/2" FNPT	NA601050-PVCT
	PVDF	Viton	1/2" FNPT	NA601050-PVCV
		EPDM	3/8" FNPT	NA601038-PVDE
		CSPE	3/8" FNPT	NA601038-PVDC
		TFE	3/8" FNPT	NA601038-PVDT
		Viton	3/8" FNPT	NA601038-PVDV
	316 SS	EPDM	3/8" FNPT	NA601038-316E
		CSPE	3/8" FNPT	NA601038-316C
		TFE	3/8" FNPT	NA601038-316T
85 cubic inches	POLY	Viton	3/8" FNPT	NA601038-316V
		EPDM	3/4" FNPT	NA608575-FPPE
		CSPE	3/4" FNPT	NA608575-FPPC
		TFE	3/4" FNPT	NA608575-FPPT
	PVDF	Viton	3/4" FNPT	NA608575-FPPV
		EPDM	3/4" FNPT	NA608575-PVDE
		CSPE	3/4" FNPT	NA608575-PVDC
		TFE	3/4" FNPT	NA608575-PVDT
		Viton	3/4" FNPT	NA608575-PVDV
	316 SS	EPDM	3/4" FNPT	NA608575-316E
		CSPE	3/4" FNPT	NA608575-316C
		TFE	3/4" FNPT	NA608575-316T
		Viton	3/4" FNPT	NA608575-316V

150 PSI Pulsation Dampeners - Chargeable				
Volume	Body	Bladder	Connection	Part Number
370 cubic inches	POLY	EPDM	2" FNPT	NA637020-FPPE
		CSPE	2" FNPT	NA637020-FPPC
		TFE	2" FNPT	NA637020-FPPT
		Viton	2" FNPT	NA637020-FPPV
	PVDF	EPDM	2" FNPT	NA637020-PVDE
		CSPE	2" FNPT	NA637020-PVDC
		TFE	2" FNPT	NA637020-PVDT
		Viton	2" FNPT	NA637020-PVDV
	316 SS	EPDM	2" FNPT	NA637020-316E
		CSPE	2" FNPT	NA637020-316C
		TFE	2" FNPT	NA637020-316T
		Viton	2" FNPT	NA637020-316V
36 cubic inches	POLY	EPDM	3/4" FNPT	NA603675-FPPE
		CSPE	3/4" FNPT	NA603675-FPPC
		TFE	3/4" FNPT	NA603675-FPPT
		Viton	3/4" FNPT	NA603675-FPPV
	PVDF	EPDM	3/4" FNPT	NA603675-PVDE
		CSPE	3/4" FNPT	NA603675-PVDC
		TFE	3/4" FNPT	NA603675-PVDT
		Viton	3/4" FNPT	NA603675-PVDV
	316 SS	EPDM	3/4" FNPT	NA603675-316E
		CSPE	3/4" FNPT	NA603675-316C
		TFE	3/4" FNPT	NA603675-316T
		Viton	3/4" FNPT	NA603675-316V
175 cubic inches	POLY	EPDM	2" FNPT	NA617520-FPPE
		CSPE	2" FNPT	NA617520-FPPC
		TFE	2" FNPT	NA617520-FPPT
		Viton	2" FNPT	NA617520-FPPV
	PVDF	EPDM	2" FNPT	NA617520-PVDE
		CSPE	2" FNPT	NA617520-PVDC
		TFE	2" FNPT	NA617520-PVDT
		Viton	2" FNPT	NA617520-PVDV
	316 SS	EPDM	2" FNPT	NA617520-316E
		CSPE	2" FNPT	NA617520-316C
		TFE	2" FNPT	NA617520-316T
		Viton	2" FNPT	NA617520-316V

Specifications: 150 PSI Maximum Pressure

Water Meters - Contacting Head Water Meters

Multi-Jet Meters:

3/4 in. to 2 in., are designed for use in conjunction with a pulse timer to proportionally control pumps, valves etc. Typical applications include water treatment in cooling tower and boiler systems, water chlorination, car washes and other industrial processes which require proportional control. The Multi-Jet chamber of the water meter assures accuracy over a wide range of flows with low head loss. To prevent wear and maintain accuracy the load is equally distributed on the impeller.

Turbine Meters:

3 inch to 6 inch operate continuously with exceptional accuracy. Each meter incorporates a highly efficient horizontal turbine that essentially floats on the water. The turbine is attached to a Tungsten steel shaft riding in Jewel bearings. The rotation of the turbine is transmitted through a magnetic drive to a sealed odometer register.



Lead Free Brass Contacting Water Meters - Cold Water

Part Number	Rating	Size	Gallons Per Contact (GPC)
MTR100-G	.25 - 20 GPM	.75" NPT	Totalizer
MTR101-G	.25 - 20 GPM	.75" NPT	0.1 GPC
MTR102-G	.25 - 20 GPM	.75" NPT	0.25 GPC
MTR103-G	.25 - 20 GPM	.75" NPT	0.5 GPC
MTR104-G	.25 - 20 GPM	.75" NPT	1 GPC
MTR107-G	.25 - 20 GPM	.75" NPT	10 GPC
MTR300-G	.75 - 50 GPM	1" NPT	Totalizer
MTR301-G	.75 - 50 GPM	1" NPT	0.1 GPC
MTR302-G	.75 - 50 GPM	1" NPT	0.25 GPC
MTR304-G	.75 - 50 GPM	1" NPT	1 GPC
MTR307-G	.75 - 50 GPM	1" NPT	10 GPC
MTR310-G	.75 - 50 GPM	1" NPT	100 GPC
MTR400-G	1.5 - 100 GPM	1.5" NPT	Totalizer
MTR402-G	1.5 - 100 GPM	1.5" NPT	0.25 GPC
MTR404-G	1.5 - 100 GPM	1.5" NPT	1 GPC
MTR407-G	1.5 - 100 GPM	1.5" NPT	10 GPC
MTR410-G	1.5 - 100 GPM	1.5" NPT	100 GPC
MTR504-G	2 - 160 GPM	2" NPT	1 GPC
MTR507-G	2 - 160 GPM	2" NPT	10 GPC
MTR510-G	2 - 160 GPM	2" NPT	100 GPC

3/4" - 2" Meters have male Epoxy Coated NPT Bronze Bodies with unions,
Rated for 150 PSI max, 105 F max.
NSF/ANSI 61 for these models only

Brass Contacting Water Meters - Cold Water

Part Number	Rating	Size	Gallons Per Contact (GPC)
MTR200	.5 - 20 GPM	.75" NPT	Totalizer
MTR201	.5 - 20 GPM	.75" NPT	0.1 GPC
MTR202	.5 - 20 GPM	.75" NPT	0.25 GPC
MTR203	.5 - 20 GPM	.75" NPT	0.50 GPC
MTR204	.5 - 20 GPM	.75" NPT	1 GPC
MTR207	.5 - 20 GPM	.75" NPT	10 GPC
MTR210	.5 - 20 GPM	.75" NPT	100 GPC
MTR300	.75 - 50 GPM	1" NPT	Totalizer
MTR302	.75 - 50 GPM	1" NPT	0.25 GPC
MTR304	.75 - 50 GPM	1" NPT	1 GPC
MTR307	.75 - 50 GPM	1" NPT	10 GPC
MTR310	.75 - 50 GPM	1" NPT	100 GPC
MTR400	1.5 - 100 GPM	1.5" NPT	Totalizer
MTR404	1.5 - 100 GPM	1.5" NPT	1 GPC
MTR407	1.5 - 100 GPM	1.5" NPT	10 GPC
MTR410	1.5 - 100 GPM	1.5" NPT	100 GPC
MTR504	2 - 160 GPM	2" NPT	1 GPC
MTR507	2 - 160 GPM	2" NPT	10 GPC
MTR510	2 - 160 GPM	2" NPT	100 GPC

3/4" - 2" Meters have male Epoxy Coated NPT Bronze
Bodies with unions, rated for 150 PSI max, 105 F max.

Plastic Contacting Water Meters - Cold Water

Part Number	Rating	Size	Gallons Per Contact (GPC)
MTR100-P	.25 - 20 GPM	.75" NPT	Totalizer
MTR101-P	.25 - 20 GPM	.75" NPT	0.1 GPC
MTR102-P	.25 - 20 GPM	.75" NPT	0.25 GPC
MTR104-P	.25 - 20 GPM	.75" NPT	1 GPC
MTR104-P-L	.25 - 20 GPM	.75" NPT	1 LPC
MTR107-P	.25 - 20 GPM	.75" NPT	10 GPC
MTR300-P	.75 - 50 GPM	1" NPT	Totalizer
MTR301-P	.75 - 50 GPM	1" NPT	0.1 GPC
MTR302-P	.75 - 50 GPM	1" NPT	0.25 GPC
MTR304-P	.75 - 50 GPM	1" NPT	1 GPC
MTR304-P-L	.75 - 50 GPM	1" NPT	1 LPC
MTR307-P	.75 - 50 GPM	1" NPT	10 GPC
MTR400-P	1.5 - 100 GPM	1.5" NPT	Totalizer
MTR402-P	1.5 - 100 GPM	1.5" NPT	0.25 GPC
MTR404-P	1.5 - 100 GPM	1.5" NPT	1 GPC
MTR407-P	1.5 - 100 GPM	1.5" NPT	10 GPC

Rated for 100 PSI max, 120 F max.
NSF/ANSI 61 for these models only

Turbine Contacting Water Meters - Cold Water

Part Number	Rating	Size	Gallons Per Contact (GPC)
MTR610	440 GPM	3" Flanged	100 GPC
MTR613	440 GPM	3" Flanged	1,000 GPC
MTR710	660 GPM	4" Flanged	100 GPC
MTR810	1650 GPM	6" Flanged	100 GPC
MTR813	1650 GPM	6" Flanged	1,000 GPC

3", 4" & 6" Meters have Epoxy Coated Ductile Iron Flanged
Bodies, rated for 200 PSI max, 105 F max.

Water Meters get a pump accessory discount

Mixers

Mounts

Bracket Mount: two rugged steel brackets with four stainless steel bolts for mounting on a flat surface.

Thread Mount: provides a 2" threaded nipple for direct mounting on the bung of a supply drum or other threaded connector.

Flange Mount: a steel flange with four stainless steel bolts for mounting the mixer directly over the shaft hole.

Horsepower and Motor Types

Open: 1/3 and 1/2 horsepower motors are 1725 rpm, 115 volt, 60 cycle, split phase, sleeve bearing. 1 horsepower motors are 1725 rpm, 115/230 volt, 60 cycle, capacitor start, sleeve bearing.

Totally Enclosed: 1/20 horsepower motors are 1500 rpm, 115 volt, 60 cycle, ball bearing, shaded pole, totally enclosed air open.

Prewired: 6', 3 wire 18 gauge SJ cord and plug installed at factory

Vinyl Coated: Special vinyl corrosion resistant coating for stainless steel impeller and shaft required for sodium hypochlorite.

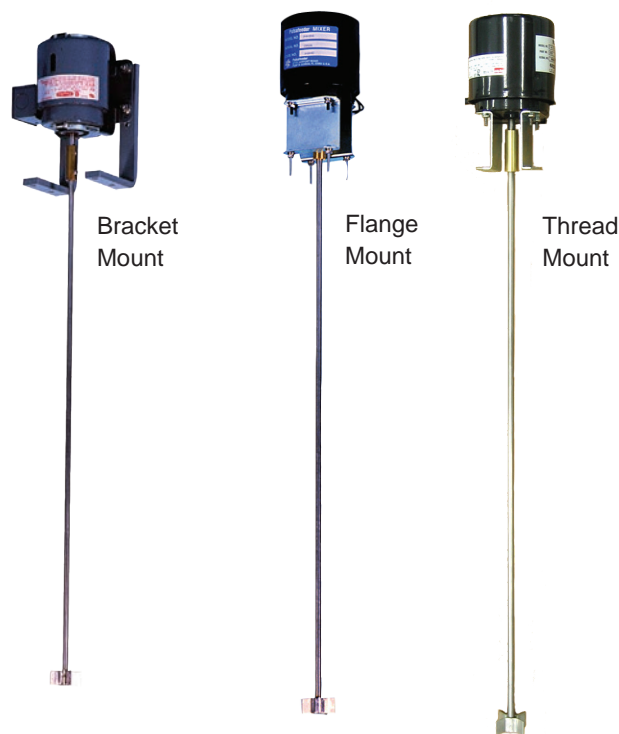
Optional Features

Suction Tube Shield Assembly: 1" PVC tube. Prevents pump suction tubing from entangling with mixer blade.

Part Number

28655 = 29" - 55 gal. (See page 21 for table)

28656 = 20" - 35 gal. (See page 21 for table)



Mixers					
Mount	Motor Type	Model Number	Description	HP	Shaft Length
Bracket Mount	Totally Enclosed Air Open	42747	115V ONLY	1/20	28"
		42829	230V/60Hz / Prewired	1/20	28"
		42844	115V / Prewired	1/3	36"
		J64080	230V/50Hz / Vinyl Coated	1/2	36"
		42779	115V/230V/60Hz / Vinyl Coated	1/2	44"
		42733	115V	1	48"
Clamp Mount	Totally Enclosed Air Open	42738	115V/230/60Hz	1/4	34"
		42737	115V/230/60Hz	1/2	44"
Flange Mount	Totally* Enclosed Air Open	J64013	115V / Prewired	1/20	24"
		J64027	115V / Vinyl Coated & Prewired	1/20	24"
		42748	115V	1/20	28"
		42753	115V / Prewired	1/20	28"
		42827	230V/50Hz / Prewired	1/20	28"
		42821	115V / Vinyl Coated & Prewired	1/20	28"
		J64017	230V/50Hz / Vinyl Coated & Prewired	1/20	28"
		J42887	230V/60Hz / Vinyl Coated & Prewired	1/20	28"
		J42898	230V/60Hz / Prewired (UK)	1/20	28"
Thread Mount	Open	42729	115V / Prewired	1/3	36"

All Mixers are equipped with 316SS impeller

WHEN MIXING SODIUM HYPOCHLORITE, ORDER VINYL SHAFT COATING.

No Mixer on 15 gallon Tank.

For explosion proof motor consult factory.

* Use only Tank Model 40365 or J40366 with 1/20 hp Mixers.

Material Specifications	Description
Shaft Materials	316 Stainless Steel
Standard Shaft O.D. and Length	1/20 horsepower 5/16" x 28"
	1/4 horsepower 1/2" x 34"
	1/3 horsepower 1/2" x 36"
	1/2 horsepower 1/2" x 44"
	1 horsepower 5/8" x 48"
Shaft Motor/Coupling Mounts	Brass with Stainless Steel set screws. All mounts are steel with corrosion resistant paint. All bolts are 18/8 Stainless Steel.
Impellers	Impeller sizes vary with each horsepower motor to provide maximum mixing action with each model. 316 Stainless Steel recommended for non abrasive solutions that accept 316 Stainless Steel.

Solution Tanks

Tank Systems are a rugged line of tanks designed to fit most solution handling needs. All tanks are constructed of polyethylene (PE) and come in a variety of sizes.

Light Duty Linear Tanks

Our Light Duty Linear Tanks come in sizes from 15 to 75 gallons. The 15 gallon tanks are translucent with 5 gallon increments and feature child resistant black caps. 30 gallon tanks are HDPE Cream and 40 gallon tanks are HDPE White. The 75 gallon tanks are HDPE Black and feature a integral molded top with a 4 inch diameter opening.

Heavy Duty Tapered Tanks

Tapered HDPE tanks feature rigid covers which allow the top mounting of Chem-Tech 100, 200 and most PULSAtron pump models. 1/20 HP Flange Mount Mixers may also be mounted on the cover. Tanks available in 35 and 50 gallon capacities are translucent with 5 gallon graduations. (Not suitable for use with 1/3 HP Flange Mount Mixers.)

Industrial Duty Tank Systems

Tanks and covers are constructed of translucent PE with tank stands constructed of heavy gauge steel with a black corrosion resistant finish. The space conserving base for pump mounting under tank prevents loss of prime by maintaining a flooded suction. Industrial Duty Tank Systems come completely piped with PVC bulkhead, ball valve, Y strainer and suction tubing. Tank features graduated increments in both U.S. gallons and liters.



				Stand Options		
	Size Gallons	Wall	Tank Model	Series 100	Series C, C+, A+ & E*	Series E+ & E (LE33, LE34 & LE44)
Light Duty	15	0.078"	40375	39320	J39373	J39378
	30	0.094"	J40360	39322	J39374	J39379
	40	0.094"	J40361			
	75	0.125"	J40362	39324	J39377	J39382
Heavy Duty	35	0.125"	40365	39323	J39375	J39380
	50	0.125"	J40366	39321	J39376	J39379

* Note: All Series E pumps except (LE33, LE34 & LE44)

	Size Gallons	Height Tank Only	Dia at Base	Dia at Top	Wall Thk.	Material	Lid / Cover Type	Pump Mounting Options	Part Number
Heavy Wall	30	21.75"	21"	24.5"	0.25"	PE Translucent	Rigid PE Cover	Cover Mount	42400
	55	33.75"	21"	24.5"	0.25"				42401
Industrial	30	32"	18"	21"	0.25"	PE Translucent	FRP w/ White Gelcoat	Base Mount	42402
	55	32"	24"	27"	0.25"				42396
	100	37"	30"	33"	0.31"				42397
	150	54"	30"	33"	0.31"				42398
	200	56"	34"	37"	0.31"				42399

Double Wall Containment Tanks

Dual Containment Tank Systems are designed for chemical feed and water treatment applications. All prices include standard access openings and threaded connections making these tanks ready to place in service as equipped. All of our tanks meet or exceed the EPA's requirements for secondary containment under 40-CFR 264.175. Standard Openings— 8" (16" on 300 gal.-up) Twist Lid, 2" & 1" female NPT top connections (plugged).



Double Wall Containment Tank							
Item Type	Size Gallons	Height	Diameter	Material	Lid / Cover Type	Pump Mounting Options	Part Number
Dual Wall w/ Fill Top & Pump Mount Pad	15	25.25"	19.5"	Blue PE	4" Fill Cap	None	42403
	20	23"	23.25"		8" Fill Cap	Top Mount	42404
	40	40.5"	23.25"				42405
	62	38.25"	25"				42406
	120	47"	32"				42407
	220	47"	48"				42408
	300	60"	48"		16" Fill Cap	42409	
	500	61"	60"			42410	

Integrated Tank Systems

The ITS System is a completely integrated tank system constructed of high density UV resistant polyethylene (PE) with a 15 gallon capacity. This tank system is translucent with 5 gallon increments and the tank's low level indicator allows visual monitoring of chemicals without opening the tank. The tight fitting child proof lid keeps the chemical free of contaminants and protects the surrounding area from chemical fumes.

The ITS System also allows for easy access to the liquid end and control panel of the mounted pump.

A system consists of a chemical tank with lid and bulkhead fittings, a liquid level indicator, float assembly and feeder mounting hardware.



ITS Tank Systems					
Size Gallons	Pump Type	Pump Series	Housing	Tube Conn. Size	System Part No.
15	Chem-Tech	XP	N/A	1/4"	J63063
		Series 100		3/8"	J40489
				1/2"	J40490
	PULSAtron	"1" or "J" conn.	Series A+, C, C+, E (except below)	3/8"	J40492
		"A" conn.		1/2"	J40493
		"1" or "J" conn.	E (LE33-44) and E+	3/8"	J40495
		#3 conn.		1/2"	J40496

Tank, Stand & Feed Pump Tank Systems

The TSF System is a complete compact feed system with from 7.5 up to 15 gallon capacity. The chemical storage tank and metering pump both mount on a common, fitted base for a precise, secure installation. The 15 gallon tank has a low level indicator that allows visual monitoring of supply without opening the tank.



TSF Selection Table				
Size Gallons	Pump Type	Pump Series	Tube Conn. Size	System Part No.
15	Chem-Tech	Series 100	1/2"	J40442
			3/8"	J40443
	PULSAtron	"A" conn.	1/2"	J40444
		#1 conn.	3/8"	J40445
		"J" conn.	5/16"	J40482

PVC Tank Accessories

PVC Tank Accessories		
Tube Size	Component	Part Number
1/2"	Y - Strainer	40085
	Shut-Off Valve	41558
	Bulkhead Assembly	26861

Spill Containment - Pallet & Accessories

Safely store your Chemical Drums on our 1, 2 or 4 Drum Spill Containment Pallets. These rugged polyethylene pallets are available with or without covers and exceed the EPA's requirements for secondary containment in 40-CFR 264.175.



Spill Containment	
Part Number	Description
42420	1 Drum Containment Pallet, 12" x 40" x 40", PE
42421	1 Drum Spill Containment Unit with Hardtop, 66" x 36" x 36"
42422	2 Drum Containment Pallet, 8.75" x 40" x 65.5"
42423	2 Drum Spill Containment Unit with Hardtop, 74" x 41.25" x 67.25"
42424	4 Drum Containment Pallet, 11.75" x 53" x 53"
42426	Loading ramp for 1 and 4 drum spill pallets w/o cover
42427	Caster dolly for 1 drum unit with cover

Pump Containment Shelf

The Pump Containment Shelf is designed to safely and securely mount your metering pumps on a wall or level surface and contain any potential spills caused by pump or tubing leaks. The Pump Containment Shelf has a 1/4" FPT drain connection on the base that can be connected to a drum or other container to automatically catch any potential leaks that may occur. The pump base is elevated and removable for the easy installation and servicing of your pumps. The cover protects your equipment from the elements and tampering by unauthorized personnel. The view window allows visual inspection of the enclosures interior while the lid is secured. Designed for up to 2 standard Pulsatron or Chem-Tech metering pumps.



1 or 2 Pump Containment Shelf - PE

Part Number	Description
42411	Pump Containment Shelf with Cover - 22"H x 19"W x 19"D

Static Inline Mixer

The inline static mixer uses ordinary line pressure to create turbulence which provides good chemical mixing in the process line.

PVC construction

Accommodates flow rates from 3 to 25 GPM

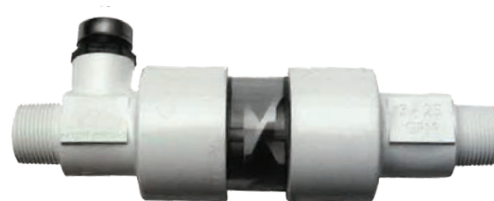
1" NPT inlet and outlet

1/2" diameter chemical port inlet

140 psi

Weight: 1 lb.

10.0" long, 2.8" OD



Static Inline Mixer

Part Number	Description
STM100-PVC	Static Inline Mixer

Bulkhead Fitting Assemblies

Installation of a metering pump in a flooded suction installation requires the installation of a bulkhead fitting through the side wall of the tank in order to connect the suction and bleed valve to the return tubing. The 3/8" bulkhead is typically used for the bleed valve return line which is why it is supplied without a strainer.



Bulkhead Fitting Assemblies

Tube Size	Strainer	Part Number (Kit Only)	Part Number (Assembled in Tank)**
5/16"	Yes	J26906	
		26860	26860AT
3/8"	No	J26885	J26885AT
1/2"	Yes	26859	26859AT

** Fitting will be pre-assembled when ordered with this part number and a 15 - 75 gallon tank.

Flow Meter

Easy to install, easy to maintain flow meters. Calibrated in GPM/LPM with easy to read numbering. Available 1" to 4" pipe size. Durable acrylic construction at economical prices. Rated at 120 PSI max.



Visual Flow Meters

Part Number	Description	GPM	LPM	Accuracy
U8800424	1" Flowmeter	5-35 GPM	20-130 LPM	5-10%
U8800438	1-1/4" Flowmeter	10-60 GPM	40-220 LPM	5-10%
U8800439	1-1/2" Flowmeter	20-80 GPM	80-300 LPM	5-10%
U8800440	2" Flowmeter	30-140 GPM	120-550 LPM	5-10%
U8800441	2-1/2" Flowmeter	40-200 GPM	160-750 LPM	5-10%
U8800442	3" Flowmeter	80-350 GPM	300-1300 LPM	5-10%
U8800443	4" Flowmeter	150-600 GPM	600-2200 LPM	5-10%

Liquid Level Wands

The Level Wand is designed to be inserted into a chemical container with a 2" bung hole. The wand can then be adjusted to the proper level and secured in place. A low voltage cable connects the control box to the level wand. When a low level condition occurs the monitor deactivates the metering pump control relay and at the same time activates the alarm output relay.



Liquid Level Wands	
Part Number	Description
16-171-81-4	Level Wand - Level adjustable up to 60". Switch contacts 28 VDC 50 mA. Order 16-171-81-3 when using PULSAtron Pumps with the Stop Function Feature.
16-171-81-1	Level Wand - Level adjustable up to 42". Switch contacts 28 VDC 50 mA. Order 16-171-81-3 when using PULSAtron Pumps with the Stop Function Feature.
16-171-81-2	Level Wand - Level adjustable up to 26". Switch contacts 28 VDC 50 mA. Order 16-171-81-3 when using PULSAtron Pumps with the Stop Function Feature.
16-171-81-3	10' cable w/ connector for 16-171-81-1, 16-171-81-2 & 16-171-81-4 to use w/ PULSAtron Pumps with the Stop Function Feature

NOTE: When utilizing a Pump Model w/ external/stop feature, order 16-171-81-4, 16-171-81-1 or 16-171-81-2 in addition to 16-171-81-3.

Flow Controller

The versatile Flow Controller may be used to establish flow/no- flow control of metering pumps in various applications. Each unit comes prewired with an eight-foot, three-wire power cord for easy installation. A test switch is also provided for manual circuit tests.



Flow Controllers	
Model No.	Description
FC2000	Flow Controller - Standard flow controller has 3/4" PVC threaded connections with 3/4" PVC slip adaptors to use if needed. 1 GPM minimum flow required for activation
FC2000C	Flow Controller - Standard flow controller w/ 1 PVC slip connectors; 1 GPM min. flow required for activation.
Available options for FC2000 & FC2000C:	
Receptacle functions (Standard--both on with flow)	
1	Both on with no flow
2	One on with flow, other on no flow
3	One on with flow, other service
4	One on with no flow, other service

Adjustable Back Pressure & Pressure Relief Valves

Back Pressure valves provide positive back pressure for systems with less than the minimum required pressure difference between the discharge and suction side of the metering pump to assure best metering performance. Select to match the pumps' discharge connection size. In installations where the injection point is lower than the level of chemical in the supply tank the potential for gravity feeding of chemical is a possible concern. Back Pressure valves prevent this from occurring and can be easily added to most chemical feed pumps.



Back Pressure & Pressure Relief Valves - 150 PSI			
Component	Size NPT	Material	Part Number
Pressure Relief Valves	1/2"	PVC/TFE	NA100001-PVC
	1/2"	PVDF/TFE	NA100001-PVD
	1/2"	SS/TFE	NA100001-316
	1"	PVC/TFE	NA100002-PVC
	1"	PVDF/TFE	NA100002-PVD
	1"	SS/TFE	NA100002-316
	1.5"	PVC/TFE	NA100003-PVC
	1.5"	PVDF/TFE	NA100003-PVD
Back Pressure Valves	1/2"	PVC/TFE	NA200001-PVC
	1/2"	PVDF/TFE	NA200001-PVD
	1/2"	SS/TFE	NA200001-316
	1"	PVC/TFE	NA200002-PVC
	1"	PVDF/TFE	NA200002-PVD
	1"	SS/TFE	NA200002-316
	1.5"	PVC/TFE	NA200003-PVC
	1.5"	PVDF/TFE	NA200003-PVD

PULSAtron 1" Flow Meters

Pulsafeeder's PULSAtron 1" Flow Meter without the controller shown on pg can be used as a standalone Hall effect meter for use with XPV Series and MicroVision Series products as well as any product that has a Hall effect input. The meter is available with a controller that has a 4-20mA output.



PULSAtron 1" Flow Meter

Part Number	Description
04-610-10	1" Flow Meter 28" Cord
04-610-11	1" Flow Meter 15" Cord

PULSAtron 1" Flow Meter with Controller

Part Number	Description
04-610-12	1" Flow Meter with Controller 28" Cord
04-610-13	1" Flow Meter with Controller 15" Cord

Flow Indicator

The Pulsafeeder flow indicator meets the revised NSF standard requirement for a visual signal to determine that a pump is delivering a solution. The indicator is easily attached to the supply line or discharge line and a ball visually indicates that the solution is being delivered by its position in the indicator. The flow indicator is reliable, easily observed and virtually nonsusceptible to functional failures.



Flow Indicators

Part Number	Description
U7012309	Flow Indicator 1/4" x 3/8" Acrylic Body (100 PSI max)
U7012383	Flow Indicator 1/8" x 1/4" Acrylic Body (100 PSI max)

Tube Shield

The Suction tubing shield protects the metering pumps suction line from tank mounted mixer impellers and also insures the tubing remain vertical in the tank.



Tube Shield

Model Number	Description
28655 29" - 55 gal.	Suction Tube Shield Assembly. 1" PVC tube. Prevents pump suction tubing from entangling with mixer blade.
28656 20" - 35 gal.	

Strainer Assembly



Strainer Assembly

Part Number	Description
J60576	Strainer Assembly FPP/TFE/C 1/2"OD
J60716	Strainer Assembly PVD/TFE/C 3/8"OD
J60728	Strainer Assembly PVD/TFE/C 1/2"OD

Calibration Columns & Kits

Calibration columns are used on the supply side of the pump to permit flow calibration. Never subject the column to vacuum or pressure. The calibration kits includes compression fittings for connecting them to pumps with tubing connections, and isolation valves. To determine the minimum column capacity (mL); Multiply the pumps' rated flow rate, GPH x draw down time, sec. x 0.00028 x 3785.



Calibration Kits

Size	Column	Assembled Part Number
3/8" OD	200 mL	L9908502-001
1/2" OD		L9908503-001

Calibration Columns

Size	Column	Part Number
1/2"	PVC 100mL	NA300001-PVC
1/2"	PVC 200mL	NA300002-PVC
3/4"	PVC 500mL	NA300003-PVC
3/4"	PVC 1000mL	NA300004-PVC
1"	PVC 2000mL	NA300005-PVC
1"	PVC 4000mL	NA300006-PVC
2"	PVC 10,000mL	NA300007-PVC
2"	PVC 20,000mL	NA300008-PVC
1/2"	Glass/PVD 100mL	NA300009-PVD
1/2"	Glass/PVD 200mL	NA300010-PVD
3/4"	Glass/PVD 500mL	NA300011-PVD
3/4"	Glass/PVD 1000mL	NA300012-PVD
1"	Glass/PVD 2000mL	NA300013-PVD
1"	Glass/PVD 4000mL	NA300014-PVD

Five Function Valve

This easily installed valve allows simple, one-handed operation. Upgrades Chem-Tech Series 100 and Series 200 metering pumps, plus all pulsatron models up to 240 GPD

Relieves Pressure
Controls Back Pressure

Aids Priming
Prevents Siphoning

Drains Discharge Line



Five Function Valve Selection Guide

Five Function Valve	L380	= Five Function Valve	L380	-	-	--	---
Max Pressure Rating	B	= 50 PSI					
	D	= 100 PSI					
	F	= 150 PSI					
	K	= 250 PSI					
O-Ring Material	T	= TFE					
Connection Size	01	= 3/8" (0.95 cm) OD Tubing Connection					
	02	= 1/4" (0.635 cm) Male MNPT Connection					
	03	= 1/2" (1.27 cm) OD Tubing Connection					
	0P	= 4 x 6 mm					
	0N	= 4 x 10 mm					
	0S	= 6 x 10 mm					
	0Y	= 6 x 12 mm					
	0Q	= 10 x 14 mm					
Body Materials	PVD	= Polyvinylidene Fluoride (PVDF or Kynar)					

Five Function Valve

This easily installed valve allows simple, one-handed operation. Upgrades Chem-Tech Series 100 and Series 200 metering pumps, plus all pulsatron models up to 240 GPD

Relieves Pressure
Controls Back Pressure

Aids Priming
Prevents Siphoning

Drains Discharge Line



Five Function/Degas Valve Selection Guide

Five Function Valve	L385	= Five Function Degas Valve	L385	-	-	--	---
Max Pressure Rating	K	= 250 PSI					
O-Ring Material	V	= Viton					
	H	= CSPE					
Connection Size	01	= 3/8" (0.95 cm) OD Tubing Connection					
	02	= 1/4" (0.635 cm) Male MNPT Connection					
	03	= 1/2" (1.27 cm) OD Tubing Connection					
	0P	= 4 x 6 mm					
	0N	= 4 x 10 mm					
	0S	= 6 x 10 mm					
	0Y	= 6 x 12 mm					
	0Q	= 10 x 14 mm					
Body Materials	PVD	= Polyvinylidene Fluoride (PVDF or Kynar)					

6" Injectors

When injecting into a water line, its desirable to have the tip of the injection valve close to the center of flow to ensure adequate chemical dispersion. Pulsafeeder 6" injectors can be trimmed to accommodate various pipe sizes. Another alternative is to use a Pulsafeeder corporation stop assembly see page 24.



6" Injectors		
Size	Material	Part Number
3/8" OD	PVC-CSPE-C w/ Ball Check Assy	41705
1/2" OD		41698
3/8" OD	PVC-Viton-C w/ Ball Check Assy	41699
1/2" OD		41700
3/8" OD	FPP-Viton-C w/ Ball Check Assy	41701
1/2" OD		41702

In-line Anti-siphon Valve

In installations where the injection point is lower that the level of chemical in the supply tank the potential for gravity feeding of chemical is a possible concern. The inline anti-siphon valves prevent this from occurring and can be easily added to most chemical feed pumps.



In-Line Anti-Siphon Valve	
Part Number	Description
U8800406	In-Line Anti-Siphon Valve 3/8" OD PVC
U8800489	In-Line Anti-Siphon Valve 1/4" OD PVC
U8801263	In-Line Check Valve PVC/Viton 1/4"OD

Tubing - 100 Foot Rolls

Periodic replacement of a metering pumps suction tubing is recommended to ensure optimum system performance. Easily stock extra tubing with these convenient 100 foot rolls. Clear PVC tubing is used on the suction side and is rated up to 50 PSI, PE tubing can be used on the discharge and return lines and is rated up to 150 PSI. Other tubing materials are also available, consult the factory for more information.



Tubing - 100 Ft. Rolls		
Tube Size	Description	Part Number
3/8" OD	Clear PVC Suction	J41444
1/2" OD		J41445
3/8" OD	Translucent PE Discharge	J41447
1/2" OD		J41448
1/4" OD	Black PE - Disc.	J41452
	White PE - Disc.	U0811307

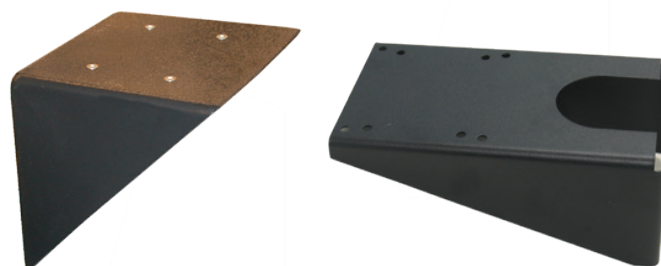
Wall Mounting Bracket

The rugged, Pulsafeeder wall mounting brackets provide for easy, secure installation of the metering pump in a variety of environments. Pulsafeeder has two types of materials for wall mount brackets available to suit your needs. Brackets are available in either plastic or steel. These wall mount brackets will provide a stable mounting surface for your pump with mounting hardware included, making installation simple.

Side Mount Bracket: For pumps that need to be side mounted the plastic wall mount bracket will hold a pump up to 22 pounds and Pulsafeeder's 12 gauge stainless steel wall mount bracket can hold a pump up to 50 pounds.

Forward Mount Bracket: For pumps requiring forward mount position Pulsafeeder's 14 gauge steel with black epoxy coat finish will support Pulsatron pumps with the #1 or #2 size housings.*

Pulsations with a #3 size housing are the Series MP, E+, E series models (H4, H5, H6, H7, H8, K7, J7).

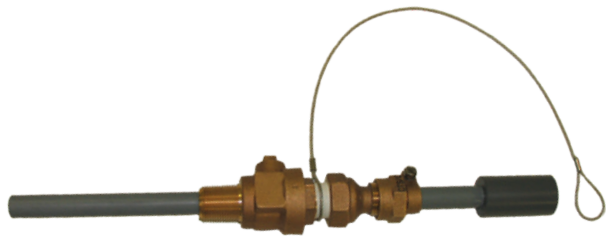


Wall Mounting Bracket Assemblies		
Mount	Material - Max Pump Wt.	Part Number
Side	Plastic, 22 lbs	L9908200-000
	12 Ga. SS, 50 lbs	L9902700-000
Forward	*14 Ga. Stl, 50 lbs	L9911600-STL

*14 Gauge steel w/ black epoxy coat finish. Cannot be used w/ Series MP, E+, E series models (H4, H5, H6, H7, H8, K7, H7)

Corporation Stop

Pulsafeeder's high quality brass corporation stop and nozzle assembly disperses chemical into the center of a line for even mixing. The Corporation Stop also permits removal of the nozzle assembly and the corporation stop closed without shutting down the line that's being treated. Available in PVC or CPVC nozzles with a 7.75" nozzle insertion depth with a rated pressure of 150 psi maximum.



Corporation Stops		
Thread	Desc	Reduced Lead Compliant Part No.
3/4" AWWA	w/ PVC Nozzle Assy	J61462-LF
3/4" NPT		J61135-LF
1" AWWA		J61136-LF
1" NPT		J61191-LF
3/4" AWWA	w/ CPVC Nozzle Assy	J61462-C-LF
3/4" NPT		J61135-C-LF
1" AWWA		J61136-C-LF
1" NPT		J61191-C-LF

Pressure Gauge

Liquid Filled Pressure Gauges in Brass or Stainless Steel 1/4" Bottom or Back Connection.



Pressure Gauge	
Bottom Connection	
Part Number	Description
12-130-04	Face 2", 100 PSI, Liquid Fill, 1/4" Brass Bottom Connection
12-130-05	Face 2", 100 PSI, Liquid Fill, 1/4" SS Bottom Connection
12-130-06	Face 2", 200 PSI, Liquid Fill, 1/4" Brass Bottom Connection
12-130-07	Face 2", 200 PSI, Liquid Fill, 1/4" SS Bottom Connection
12-130-08	Blk Steel Face 2", 100 PSI, Liquid Fill, 1/4" Brass Bottom Connection
12-130-09	Blk Steel Face 2", 200 PSI, Liquid Fill, 1/4" Brass Bottom Connection
Back Connection	
Part Number	Description
12-130-10	Face 2", 100 PSI, Liquid Fill, 1/4" Brass Back Connection
12-130-11	Face 2", 100 PSI, Liquid Fill, 1/4" SS Back Connection
12-130-12	Face 2", 200 PSI, Liquid Fill, 1/4" Brass Back Connection
12-130-13	Face 2", 200 PSI, Liquid Fill, 1/4" SS Back Connection
12-130-14	Blk Steel Face 2", 100 PSI, Liquid Fill, 1/4" Brass Back Connection
12-130-15	Blk Steel Face 2", 200 PSI, Liquid Fill, 1/4" Brass Back Connection

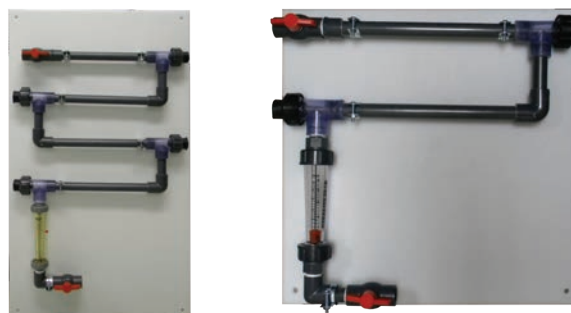
Controller Accessories

Table of Contents

Corrosion Coupon Racks	26
Coupons	26
Hand Held Testers	27
Bowl Strainer	27
Pressure Gauge	27
Solenoid & Motorized Ball Valves	28
Standard Solenoid Valves	28
High Temp Valves	28
EC Series - Motorized Valves	28
Motorized Capacitor Return Ball Valves	28
Motorized Ball Valves & Valve Packages	29
Timed Sample Systems	29
Continuous Sample Systems	29
Diverter Valves	29
Motorized Ball Valves	29
Motorized Ball Valve Parts	29
Flow Control Valves	29
Orifice Unions & Orifice Plates	29
Sample Cooler	30
Bleed Off Piping Assembly	30

Corrosion Coupon Racks

Our Corrosion Coupon Racks are hydrostatically tested for maximum system performance exceeding industry standards. These simple and reliable coupon test stations are typically installed on the side stream of re-circulating systems to allow for controlled testing of coupon samples. Samples are periodically removed and examined by a laboratory in order to calculate corrosion rates and other effects such as pitting and deposition.



Corrosion Coupon Racks - Includes PVC coupon holder, nylon screw & nut, PVC inlet ball vlv, 0.75 in (19mm) piping, Sch. 80 PVC				
Model Number	Stations	Mount	Piping	Description
CCR2	2 Station	.50" HDPE	3/4" PVC	Standard
CCR20DF5	2 Station	Unistrut	3/4" black iron	Flow control valve 5 GPM
CCR20DX7X8CF3	2 Station	Unistrut	3/4" black iron	PVC outlet ball valve, 3/4" brass gate valve 250 psi; Y Strainer; Flow control valve 3 GPM
CCR20DX7X8CF5	2 Station	Unistrut	3/4" black iron	PVC outlet ball valve, 3/4" brass gate valve 250 psi; Y Strainer; Flow control valve 5 GPM
CCR20DXSX7	2 Station	Unistrut	3/4" black iron w/ SS Holder rod	PVC outlet ball valve, 3/4" brass gate valve 250 psi
CCR20X1X4X7	2 Station	.25" HDPE	3/4" PVC	Quick release coupon holders; 3/4" hot/cold water flow meter, Max. 100 psi (7 bar) @ 130°F (54°C); PVC outlet ball valve; 3/4" brass gate valve 250 psi
CCR20X1X7F5	2 Station	.25" HDPE	3/4" PVC	Quick release coupon holders; PVC outlet ball valve; 3/4" brass gate valve 250 psi; Flow control valve 5 GPM
CCR20X1X4X7X8DX9Z4	2 Station	Unistrut	3/4" black iron	Quick release coupon holders; 3/4" hot/cold water flow meter, Max. 100 psi (7 bar) @ 130°F (54°C); PVC outlet ball valve; 3/4" brass gate valve 250 psi; 3/4" Polypropylene bowl strainer 30 mesh, 150 psi max at 70°F; Clear PVC pipe sections; Sample/Drain port
CCR20X4	2 Station	Unistrut	3/4" black iron	3/4" hot/cold water flow meter, Max. 100 psi (7 bar) @ 130°F (54°C).
CCR2D	2 Station	Unistrut	3/4" black iron	Standard
CCR3	3 Station	.50" HDPE	3/4" PVC	Standard
CCR4	4 Station	.50" HDPE	3/4" PVC	Standard
CCR40DX7X8CF5	4 Station	Unistrut	3/4" black iron	PVC outlet ball valve, 3/4" brass gate valve 250 psi; Y Strainer; Flow control valve 5 GPM
CCR40DXSX7	4 Station	Unistrut	3/4" black iron w/ SS Holder rod	PVC outlet ball valve, 3/4" brass gate valve 250 psi
CCR40X1X4X7	4 Station	.25" HDPE	3/4" PVC	Quick release coupon holders; 3/4" hot/cold water flow meter, Max. 100 psi (7 bar) @ 130°F (54°C); PVC outlet ball valve; 3/4" brass gate valve 250 psi
CCR40X1X7F5	4 Station	.25" HDPE	3/4" PVC	Quick release coupon holders; PVC outlet ball valve; 3/4" brass gate valve 250 psi; Flow control valve 5 GPM
CCR4AX1X6X7	4 Station	.50" HDPE	1" PVC	Quick release coupon holders; 1" cold water flow meter, Max. 100 psi (7 bar) @ 110°F (43°C); PVC outlet ball valve; 3/4" brass gate valve 300 psi
CCR4D	4 Station	.50" HDPE	3/4" black iron	Standard
CCR4DX4	4 Station	.50" HDPE	3/4" black iron	3/4" hot/cold water flow meter, Max. 100 psi (7 bar) @ 130°F (54°C)
CCR4EX71F5	4 Station	.50" HDPE	1" PVC clear	1" PVC outlet ball valve; 3/4" brass gate valve 300 psi; Flow control valve 5 GPM
CCR4F5	4 Station	.50" HDPE	3/4" PVC	Flow control valve 5 GPM
CCR4X1X7X8AF5	4 Station	.50" HDPE	3/4" PVC	Quick release coupon holders; PVC outlet ball valve; 3/4" brass gate valve 300 psi; Y Strainer; Flow control valve 5 GPM

Corrosion Rack Accessories



Coupon Rack Replacement Parts

Part Number	Description
16-756-51-1	Quick Release coupon holder with hardware
16-756-50	PVC and CPVC holder with hardware
16-756-42	Steel on black iron holder with hardware
33-022-16	3/4" hot/cold water flow meter

Coupons for Corrosion Coupon Racks & Deposit Monitors

Part Number	Description
03-220-10	Mild Steel
03-220-00	Copper
03-220-60	303 Stainless Steel
03-220-70	304 Stainless Steel
03-220-20	316 Stainless Steel
03-220-50	Nickel
03-221-30	Brass
03-221-40	Bronze
03-221-50	Aluminum

Hand Held Testers

The HJ series hand held testers provide reliable and accurate conductivity measurements. The easy to read dial and LED indicator make taking readings quick and simple. The HJ series also feature a low battery indicator, selectable ranges, and easy calibration. The package includes calibration solution and a 9 V battery.



Hand Held Conductivity Testers	
Model No.	Description
HJ6BC	0-100, 0-1000, 0-10,000 µS/cm
HJ7B	0-50, 0-500, 0-5,000 µS/cm

Bowl Strainer - Cooling Tower Applications

The polypropylene bowl strainers ensure the controller's sensors are protected from debris in the sample stream piping. Rated 100 psi at 70°F.



Bowl Strainers	
Part Number	Description
12-069-62	3/4" Bowl Strainer (50 MESH)
12-069-64	3/4" Bowl Strainer (80 MESH)
12-069-66	3/4" Bowl Strainer (100 MESH)

Pressure Gauge

Liquid Filled Pressure Gauges in Brass or Stainless Steel 1/4" Bottom or Back Connection.



Pressure Gauge	
Bottom Connection	
Part Number	Description
12-130-04	Face 2", 100 PSI, Liquid Fill, 1/4" Brass Bottom Connection
12-130-05	Face 2", 100 PSI, Liquid Fill, 1/4" SS Bottom Connection
12-130-06	Face 2", 200 PSI, Liquid Fill, 1/4" Brass Bottom Connection
12-130-07	Face 2", 200 PSI, Liquid Fill, 1/4" SS Bottom Connection
12-130-08	Blk Steel Face 2", 100 PSI, Liquid Fill, 1/4" Brass Bottom Connection
12-130-09	Blk Steel Face 2", 200 PSI, Liquid Fill, 1/4" Brass Bottom Connection
Back Connection	
Part Number	Description
12-130-10	Face 2", 100 PSI, Liquid Fill, 1/4" Brass Back Connection
12-130-11	Face 2", 100 PSI, Liquid Fill, 1/4" SS Back Connection
12-130-12	Face 2", 200 PSI, Liquid Fill, 1/4" Brass Back Connection
12-130-13	Face 2", 200 PSI, Liquid Fill, 1/4" SS Back Connection
12-130-14	Blk Steel Face 2", 100 PSI, Liquid Fill, 1/4" Brass Back Connection
12-130-15	Blk Steel Face 2", 200 PSI, Liquid Fill, 1/4" Brass Back Connection

Solenoid Valves - Cooling Tower Applications



Standard Solenoid Valve



High Temp Solenoid Valve

Standard Solenoid Valves - 2 Way Normally Closed

Part Number	Material	MOPD- Max. Operating Press. Differential	Voltage	Mfr
12-072-62	1/4" S.S. Body with TFE Seat	150 psi MOPD at 160°F	120/60, 110/50V	ASCO
12-072-53	1/2" NPT Brass Body	0 psi min - 150 psi; 180°F	120/60, 110/50V	ASCO
12-072-54	3/4" NPT Brass Body	0 psi min - 150 psi; 180°F	120/60, 110/50V	ASCO
12-072-55	1" NPT Brass Body	0 psi min - 150 psi; 180°F	120/60V	ASCO
12-072-56	1" NPT Brass Body	5 psi min - 150 psi at 180°F	120/60, 110/50V	ASCO
12-072-57	1 1/2" NPT Brass Body	0 psi min - 150 psi; 180°F	120/60V	ASCO
12-072-58	1 1/2" NPT Brass Body	5 psi min - 150 psi at 180°F	120/60V	ASCO
12-072-59	2" NPT Brass Body	5 psi min - 150 psi; 180°F	120/60V	ASCO

High Temp Solenoid Valves - 2 Way Normally Closed

12-072-60	1/2" NPT Brass Body	1 psi min - 125 psi	120/60V	ASCO
12-072-61	3/4" NPT Brass Body	2 psi min - 125 psi at 353°F	120/60, 110/50V	ASCO
12-048-00	1/2" Brass Body, PTFE	0 psi differential, 100 psi @ 356°F	115 VAC	
12-056-00	3/4" Brass Body, PTFE	0 psi differential, 100 psi @ 356°F	115 VAC	

Motorized Ball Valves



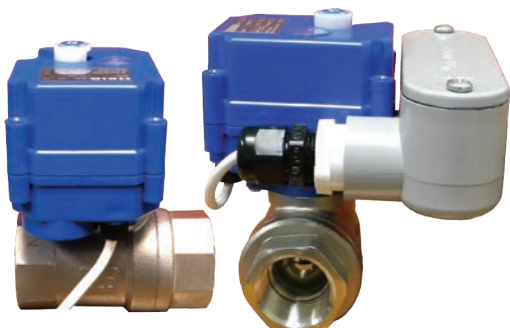
EC Series Solenoid Valve

EC Series - Motorized Valves

Part Number	Description
Motorized Valves for Cooling Tower Applications	
Low differential pressure applications. Brass bodies. Spring return.	
12-045-00	1/2" NPT (25 psi maximum)
12-054-10	3/4" NPT (25 psi maximum)
12-057-00	1" NPT (15 psi maximum)

Motorized Capacitor Return Ball Valves

A capacitor return motorized ball valve offers a reliable alternative to a solenoid valve with a full bore design for bleed-off of cooling tower water. The motorized ball valve offers a manual override feature and low working current as well as a long service life (70,000 – 100,000 cycles).



Motorized Capacitor Return Ball Valves

Part Number	Description
12-050-00	Capacitor Return MBV, 1/2", 304SS
12-050-00-J	Capacitor Return MBV W/ Power Cord, 1/2"
12-050-01	Capacitor Return MBV, 3/4", 304SS
12-050-01-J	Capacitor Return MBV W/ Power Cord, 3/4"
12-050-02	Capacitor Return MBV, 1", 304SS
12-050-02-J	Capacitor Return MBV W/ Power Cord, 1"

Motorized Ball Valves & Valve Packages - Boiler Applications

Materials of construction: Solenoid Valves are bronze body with stainless steel pilot and valves; Motorized Ball Valves are carbon steel body with 316 stainless steel ball and stem; Throttling Valves are carbon steel body and valve; and Orifice Unions are carbon steel union with stainless steel plates.



Throttling Valve



Motorized Ball Valve

Valve Packages	
Timed Sample Systems	
Part Number	Description
16-896-00	Up to 100 psi Package includes 1/2" solenoid valve (12-048-00) and 1" orifice union with 4 orifice plates (12-012-00 and 12-013-50).
16-896-04	Up to 300 psi Package includes 1/2" motorized ball valve with heavy duty 90 degree actuator (16-892-00) and 1/2" flow throttling valve (12-046-01).
16-896-08	Up to 450 psi Package includes 1/2" motorized ball valve with 360 degree actuator (16-892-02) and 1" orifice union with 4 orifice plates (12-012-00 and 12-013-50).
Valve Packages	
Continuous Sample Systems	
16-896-02	Up to 100 psi Package includes 3/4" solenoid valve (12-056-00) and two 1" orifice unions with 4 orifice plates each (12-012-00 and 12-013-50).
16-896-06	Up to 300 psi Package includes 3/4" motorized ball valve with 90 degree actuator (16-892-01), 3/4 flow throttling valve (12-055-01), and 1/2" flow throttling valve (12-046-01).
16-896-10	Up to 425 psi Package includes 3/4" motorized ball valve with 360 degree actuator (16-892-04) and two 1" orifice unions with 4 orifice plates each (12-012-00 and 12-013-50).
Available option:	
-2	230 VAC service

Note: Materials of construction: Solenoid Valves are bronze body with stainless steel pilot and valves; Motorized Ball Valves are carbon steel body with 316 stainless steel ball and stem; Throttling Valves are carbon steel body and valve; and Orifice Unions are carbon steel union with stainless steel plates.

Motorized Ball Valves	
Part Number	Description
16-892-00	1/2" motorized ball valve (10-75 Worcester Actuator)
16-892-01	3/4" motorized ball valve (10-75 Worcester Actuator)
16-892-02	1/2" motorized ball valve (10-36 Worcester Actuator)
16-892-04	3/4" motorized ball valve (10-36 Worcester Actuator)
Available option:	
-2	230 VAC service
Part Number	Description
12-040-00	Worcester 10-75 actuator only
12-040-10	Worcester 10-36 actuator only

Motorized Ball Valve Parts	
Part Number	Description
12-043-00	Worcester 1/2" steam rated ball valve only
12-051-00	Worcester 3/4" steam rated ball valve only
12-049-00	Mounting kit for 12-051-00 & 12-040-00

Flow Control Valves - Boiler Applications

Flow control valves maintain sufficient back pressure in boiler blowdown lines in order to prevent flashing and to ensure adequate blowdown rates. The orifice union includes four plates, 1/16", 1/8", 1/4" and a 5/16". Flow control valves include an indexed position indicator



Flow Control Valves



Orifice Union



Orifice Plates

Flow Control Valves	
Part Number	Description
12-075-01	3/8" valve (300 psi maximum)
12-046-01	1/2" valve (300 psi maximum)
12-055-01	3/4" valve (300 psi maximum)

Orifice Unions & Orifice Plates	
Part Number	Description
12-012-00-1	1" orifice union with set of (4) orifice plates
12-013-50	Set of four orifice plates

Sample Cooler

Pulsafeeder’s Sample Cooler part number 12-066-00 is a safe method of withdrawing water from boilers, steam lines or tanks containing chemicals and for cooling the withdrawn liquid for subsequent chemical analysis.



Sample Coolers	
Part Number	Description
12-066-00	Sample Cooler

Bleed-Off Piping Assembly - Cooling Tower Applications

The pre-plumbed bleed-off assemblies make installation of a cooling tower bleed valve easy. The assemblies include a solenoid valve, Y strainer and a brass shutoff valve.



Bleed-off Piping Assembly	
Part Number	Description
	Includes SVC solenoid valve, steel Y-strainer, and brass shutoff valve.
16-900-18	3/4"
16-900-12	1"

Sample Steam Parts

Sample Stream Parts	
Part Number	Description
12-069-00	3/4" Clear PVC Y-strainer
12-070-00	Replacement mesh for 12-069-00
12-072-00	3/4" PVC ball valve
16-810-00	2 stage injection manifold
16-810-03	3 stage injection manifold
16-810-08	5 stage injection manifold
04-300-08	Sample valve assembly