

GLASSWARE ACCESSORIES



Disposal Cartons for Glass

Safe Disposal for Lab Glassware

Sturdy corrugated cardboard receptacle is supplied with a 2 mil thick polypropylene bag to contain broken glass fragments and spilled liquids. When the box is full, lift the flap opening to a closed position, and the entire unit is ready for disposal. Printed with eye-catching graphics in four languages (English, German, French, Spanish), it is packaged flat to save space and shipping costs and is quickly assembled. Available in two sizes. The floor model holds 18kg (40lb) of waste. The benchtop model holds 5.5kg (12lb). See F13204-0001 (below) for sanitary, reusable cover for floor model. Does not qualify as a DOT container. **6 per pack, 10 packs per case.**

CATALOG NO.	MODEL	DIMENSIONS (L x W x H)	SHIPPING WEIGHT
F24653-0001	Floor	30 x 30 x 69cm (12 x 12 x 27")	6.8kg (15lb)
F24653-0002	Benchtop	20 x 20 x 25cm (8 x 8 x 10")	3.2kg (7lb)

NEW PRODUCT!

Cover for Glass Disposal Carton

Opens with a Simple Touch; Sanitary, Reusable

Dishwasher-safe and autoclave-safe, the reusable Disposal Carton Cover opens quickly and easily by pressing the built-in release tab - no batteries required! The cover fits any disposal carton with a 30.4 x 30.4cm (12 x 12") opening including

F24653-0001 Glass Disposal Floor Standing Carton (information above) and features a smooth 10.1 x 10.1cm (4 x 4") area for applying labels. The center panel is green to match the printing on the glass disposal cartons providing fast visual recognition of the waste stream. Compared to the disposable cardboard lids supplied with the cartons, the Disposal Carton Cover provides a wider opening 20.3 x 24.1cm (8" x 9½") permitting safer and more sanitary deposit of wastes into the container. Store the disposable cardboard lid under the bottom of the carton and, when carton is full, simply remove the reusable Disposal Carton Cover, replace with the cardboard lid, and dispose of the carton in the usual fashion. Wash the Disposal Carton Cover as needed, and it's ready for reuse. Autoclavable at 121°C (250°F). **Per each, 8 per case.**



CATALOG NO.	FRAME/PANEL COLOR
F13204-0001	White/Green

For Biohazard Waste Disposal Products, See Pages 6-15

Aquet® Detergent for Glassware and Plastics

*Phosphate-Free Liquid Detergent
with Neutral pH*

Safe for glassware, plastics and surfaces, this phosphate-free, biodegradable, non-ionic surfactant will not etch or mar precision glassware. It rinses quickly and dries without wiping. Convenient, pre-portioned pouches are available to make one gallon of 1% solution. For frequent users, Aquet® is offered in a 3.8 liter (1gallon) bottle with a 473ml (16oz) working solution dispenser bottle. It is also available in 18.9 liter (5 gallon) and 208 liter (55 gallon) sizes. Not for use in automatic dishwashers.



CATALOG NO.	SIZE	CASE	BOX
F17094-0020	20 ml pouch makes one gallon	N/A	20 pouches
F17094-0030	1 gallon	12	Each
F17094-0050	5 gallon Cubitainer™	6	Each
F17094-0510	55 gallon drum	N/A	N/A

Chromerge® Glass Cleaner

The Ultimate Glassware Cleaner

Leaves surfaces chemically clean, and aids in creating a perfect meniscus. Each bottle contains 25ml of chromium trioxide in solution which, when mixed with a 4.1kg (9lb) 2.2 liter container of sulfuric acid, makes a highly efficient cleaner. The mixture can be stored and re-used until it becomes green, indicating loss of effectiveness. Not for use with plastics. **6 per box, 4 boxes per case.** No Air Shipment.



CATALOG NO.

F17089-0000

Absorbant Scrubbing Sponge, See Page 75

GLASSWARE ACCESSORIES

Cleanware™ Bottle Brush

Swivel Head for Thorough Cleaning

Uniquely designed, swiveling pivot head enables thorough cleaning of bottles and flasks including difficult curves and corners. Natural bristles set in wood will not scratch glass. The swivel head fits through a 29/26 standard taper neck or any neck with a diameter of 24mm (1") or more. The brush has a 45mm (1¾") wooden back and a 33cm (13") long hardwood handle.



CATALOG NO.

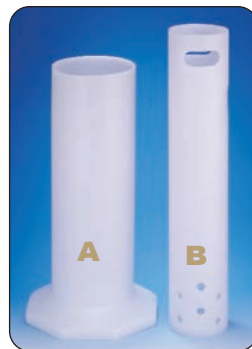
F17068-0000

Cleanware™ Pipette Rinsing System

A. Pipette Jars

For Pipette Cleaning and Storage

Leakproof, polyethylene pipette jars store and soak pipettes and will withstand all common cleaning solutions at room temperature, including sulfuric acid/dichromate. Pipette Baskets (below), filled with pipettes, fit into the corresponding size jar. **Per each, 4 per case.**



CATALOG NO.	DIAMETER	HEIGHT	HOLDS PIPETTE BASKET
F17130-0018	15.2cm (6")	46cm (18")	17106
F17130-0024	15.2cm (6")	61cm (24")	17107

B. Pipette Baskets

Avoid Costly Breakage

Pipette baskets have cut-out hand grips for easy handling. Gusher holes provide quick drainage when lifted from a soaking jar, and a foam disk on the bottom cushions pipette tips to prevent breakage. **Per each, 6 per case.**



CATALOG NO.	FOR PIPETTES	DIAMETER	HEIGHT
H17106-0000	46cm (18")	10.2cm (4")	58cm (23")
H17107-0000	61cm (24")	10.2cm (4")	81cm (32")

C. Pipette Rinsers

Effective, Reliable Design Ensures Safe, Efficient Operation

Provides a simple, automatic method for rinsing large numbers of pipettes at one time. High level water entry provides an air gap between the maximum water level and the end of the water inlet tube ensuring safe and efficient operation. The "tube within a tube" siphoning system assures rapid, complete and automatic siphoning and refilling over a wide range of inlet water pressures and flow rates. Minimizes the danger of siphon stalling at certain water inflow rates and prevents any possible backflow into the potable water supply in the event of a pressure interruption. Includes a 30.5cm (12") long piece of 2.5cm (1") I.D. drain tube and 1.5M (5ft) of 12.5mm (½") I.D. flexible water inlet tube.



CATALOG NO.	FOR PIPETTES	DIMENSIONS (W x H)	PIPETTE BASKET
F17131-0018	46cm (18")	25.2 x 64cm (9 ⁹ / ₁₀ x 25 ¹ / ₄ ")	17106
F17131-0024	61cm (24")	25.2 x 79cm (9 ⁹ / ₁₀ x 31 ¹ / ₄ ")	17107

Complete Cleanware™ Pipette Rinsing System

All Three Pieces (A, B, C) in One Convenient Set



CATALOG NO.	DESCRIPTION
H17121-0000	Items A,B,C For Pipettes up to 46cm (18")
H17122-0000	Items A,B,C For Pipettes up to 61cm (24")

Choose from a Variety of Pipette Storage Racks and Trays, See Page 279-282

GLASSWARE ACCESSORIES

Cleanware™ Stainless Steel Sponge

Cleans Glassware and Stainless Steel without Scratching

Scrub glassware and stainless steel products sparkling clean with or without detergents. There are no sharp edges to damage surfaces or irritate hands. Measuring roughly 6.4 x 10cm (2.5 x 4"), these pliant sponges are flexible enough to thoroughly clean hard to reach areas. Grade 430 steel wool. **2 per bag, 24 bags per case.**



CATALOG NO.

F17085-0000



Test Tube Baskets

For Rinsing, Transport and Storage

Ideal for rinsing glassware, these polypropylene baskets with lids are simply inverted for easy draining. Steam autoclavable at 121°C (250°F).

Per each, 6 per case.



CATALOG NO.

DIMENSIONS (L x W x H)

F18737-0000	12.7 x 10.2 x 10.2cm (5 x 4 x 4")
F18737-0010	With Lid - 12.7 x 10.2 x 10.2cm (5 x 4 x 4")
F18738-0000	15.2 x 15.2 x 15.2cm (6 x 6 x 6")
F18738-0010	With Lid - 15.2 x 15.2 x 15.2cm (6 x 6 x 6")
F18739-0000	22.9 x 22.9 x 22.9cm (9 x 9 x 9")
F18739-0010	With Lid - 22.9 x 22.9 x 22.9cm (9 x 9 x 9")

The Glascribe® Pen

For Marking Laboratory Glassware

The Glascribe® Pen, with retractable tungsten carbide tip, (Mohs Hardness = 9) easily inscribes on glass, ceramics, and plastic. The pen has a pocket clip so it is always handy when needed. **Per each, 12 per case.**



CATALOG NO.

H44150-0000

See the Labeling Section for Felt Tip Glass Marking Pens, Page 195

NEW PRODUCT!

Lab-Aire® II Drying Racks

Laboratory space is always in high demand making the small footprint of the Lab-Aire® II Drying Racks a practical solution for drying and storing fragile, frequently used labware.

Choose from **Non-electric Benchtop** or **Wallmount** drying racks or accelerate drying with the warm, flowing air from **Electric Benchtop** models. All styles have removable pegs in 3 different lengths that can be positioned for optimal use. Extra accessories and a variety of different sizes/configurations let you create a drying system that works for you.

Wallmount - Non-electric	Benchtop - Non-electric	Benchtop - Electric
<ul style="list-style-type: none"> • Space-saving, move drying off the bench • Easily mounts on walls or standard pegboard • Single-sided; can be custom made with additional height 	<ul style="list-style-type: none"> • Portable, use anywhere convenience • Offers the most choices in size • Single- and Double-sided models 	<ul style="list-style-type: none"> • Accelerate drying with warm, circulating air • Use with or without power cycle • Single- and Double-sided models: 120V or 230V



Wallmount - Non-electric
Single-sided, 2 tier



Benchtop - Non-electric
Double-sided, 1 tier



Benchtop - Electric
Single-sided, 3 tier

Increase Drying Space Three Ways

1. Go up in height – 1, 2 and 3 tier models available in all styles
2. Double-sided benchtop models double your capacity with minimal increase in footprint
3. Use multiple Lab Aire® II Dryers

Increase Flexibility

Each Lab Aire® II Dryer comes with an assortment of pegs in various lengths. Electric models also have baskets for holding small labware. Additional pegs and baskets* to customize your dryer can be purchased separately.

* Baskets fit electric models only.

Lab-Aire® II Dryers Quick Comparison Chart

Select from 12 different models with up to 114 peg positions.

- Rugged ABS plastic will never corrode and easily wipes clean
- Drip/storage trays with scalloped wells hold long thin labware
- Small (3"), Medium (4"), and Large (5") pegs can be moved and repositioned to hold a variety of labware including beakers, flasks, bottles, test tubes and cylinders
- Extra pegs and drying baskets available, page 170

	Style	Wallmount			Dimensions (W x D x H)	Peg Slots	Peg Sizes*	Model	Page #
			Benchtop	Electric					
Wallmount Non-Electric	Single 1 Tier	X	X		37.5 x 12.7 x 24cm (14.75 x 5 x 9.4")	19	S - 6, M - 7, L - 6	18933-0011	168
	Single 2 Tiers	X			37.5 x 12.7 x 41.7cm (14.75 x 5 x 16.4")	38	S - 12, M - 14, L - 12	18933-0014	168
	Single 3 Tiers	X			37.5 x 12.7 x 59.4cm (14.75 x 5 x 23.4")	57	S - 18, M - 21, L - 18	18933-0013	168
Benchtop	Single 1 Tier	X	X		37.5 x 12.7 x 24cm (14.75 x 5 x 9.4")	19	S - 6, M - 7, L - 6	18933-0011	167
	Single 2 Tiers		X		37.5 x 17.8 x 39cm (14.75 x 7 x 15.4")	38	S - 12, M - 14, L - 12	18933-0012	167
	Single 3 Tiers		X		37.5 x 17.8 x 57cm (14.75 x 7 x 22.4")	57	S - 18, M - 21, L - 18	18933-0015	167
	Double 1 Tier		X		37.5 x 25.4 x 21.3cm (14.75 x 10 x 8.4")	38	S - 12, M - 14, L - 12	18933-0021	167
	Double 2 Tiers		X		37.5 x 25.4 x 39cm (14.75 x 10 x 15.4")	76	S - 24, M - 28, L - 24	18933-0022	167
	Double 3 Tiers		X		37.5 x 25.4 x 57cm (14.75 x 10 x 22.4")	114	S - 36, M - 42, L - 36	18933-0023	167
	Single 2 Tiers	X		X	42.5 x 19 x 40cm (16.75 x 7.5 x 15.7")	19	S - 6, M - 7 L - 6 2 Baskets, 7 Peg Plugs	18819-0012 (120V) 18819-2301 (230V)	169
	Single 3 Tiers	X		X	42.5 x 19 x 57.7cm (16.75 x 7.5 x 22.7")	38	S - 12, M - 14 L - 12 2 Baskets, 14 Peg Plugs	18819-0013 (120V) 18819-2302 (230V)	169
	Double 2 Tiers	X		X	42.5 x 25.4 x 40cm (16.75 x 10 x 15.7")	38	S - 12, M - 14 L - 12 4 Baskets, 14 Peg Plugs	18819-0022 (120V) 18819-2303 (230V)	169
	Double 3 Tiers	X		X	42.5 x 25.4 x 57.7cm (16.75 x 10 x 22.7")	76	S - 24, M - 28 L - 24 4 Baskets, 28 Peg Plugs	18819-0023 (120V) 18819-2304 (230V)	169

*S - Small • M - Medium • L - Large

NEW PRODUCT!**Lab-Aire® II Non-Electric Benchtop Dryers**

Non-electric benchtop models let you place your dryer wherever it will be most convenient. Sturdy base provides excellent balance and support. Single-sided models fit nicely against a wall for economy of space. Turn double-sided models perpendicular to the bench for easy access to both sides.

**Single-sided Dryers****Double-sided Dryers**

CATALOG NO.	DESCRIPTION	FOOTPRINT L x W	HEIGHT	PEGS
F18933-0011	Single-sided, 1 tier, benchtop or wallmount	14.75" x 5"	9.4"	19
F18933-0012	Single-sided, 2 tier	14.75" x 7"	15.4"	38
F18933-0015	Single-sided, 3 tier	14.75" x 7"	22.4"	57
F18933-0021	Double-sided, 1 tier	14.75" x 10"	8.4"	38
F18933-0022	Double-sided, 2 tier	14.75" x 10"	15.4"	76
F18933-0023	Double-sided, 3 tier	14.75" x 10"	22.4"	114

NEW PRODUCT!

Lab-Aire® II Non-Electric Wallmount Dryers

Hang Labware out to Dry

Wallmount dryers keep labware up off the bench and out of the way as it dries. Easily installs on walls or standard pegboard using molded-in tabs with key hole openings. Hardware not included.



CATALOG NO.	DESCRIPTION	WALL SPACE W x H	DEPTH	PEGS
F18933-0011	Single-sided, 1 tier, bench or wallmount	14.75" x 9.4"	5"	19
F18933-0014	Single-sided, 2 tier	14.75" x 16.4"	5"	38
F18933-0013	Single-sided, 3 tier	14.75" x 23.4"	5"	57

NEW PRODUCT!

Lab-Aire® II Electric Benchtop Dryers

Electric benchtop models offer a compact footprint and accelerate drying with warm, circulating air.

- 400 watts of drying power gently circulates heated air into and around items to decrease drying time.
- Heat selector knob allows choice of three temperature settings: high, medium and low.
- Power button illuminates when in use, and an 8-amp @ 120V (4-amp @ 230V) circuit breaker and independent thermo-fuse protects unit from overheating.
- Select from single and double-sided models with up to 76 peg locations.
- Removable polypropylene baskets serve as storage for small labware and extra pegs.

NEW PRODUCT!**Lab-Aire® II Electric Benchtop Dryers**

Electric drying efficiency is enhanced with a replaceable foam filter that keeps warmed air dust free and plugs that can be inserted into unused peg holes to increase airflow to pegs in use. Like the Non-electric Benchtop models these freestanding dryers have sturdy bases with excellent balance and can be placed on any flat surface. Conserve benchtop space by placing single-sided models up against the wall. Double-sided models double your capacity with only a slightly larger footprint and can be turned perpendicular to the benchtop for easy access to both sides.



CATALOG NO.	VOLTAGE	DESCRIPTION	FOOTPRINT L x W	HEIGHT	PEGS/BASKETS
F18819-0012	120V	Electric single-sided,	16.75" x 7.5"	15.7"	19/2
F18819-2301	230V*	2 tier (2 baskets)			
F18819-0013	120V	Electric single-sided,	16.75" x 7.5"	22.7"	38/2
F18819-2302	230V*	3 tier (2 baskets)			
F18819-0022	120V	Electric double-sided,	16.75" x 10"	15.7"	38/4
F18819-2303	230V*	2 tier (4 baskets)			
F18819-0023	120V	Electric double-sided,	16.75" x 10"	22.7"	76/4
F18819-2304	230V*	3 tier (4 baskets)			

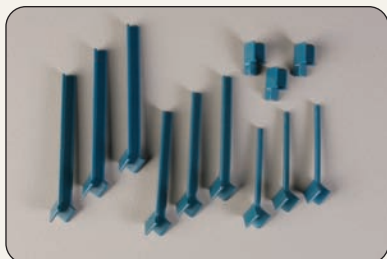
*230V models are CE approved

NEW PRODUCT!

Lab-Aire® II Dryer Accessories

For all Lab-Aire® II Benchtop and Wallmount Dryer Models

CATALOG NO.	DESCRIPTION
F18931-0001	Bag of 19 small pegs (3") and 6 plugs
F18931-0002	Bag of 19 medium pegs (4") and 6 plugs
F18931-0003	Bag of 19 large pegs (5") and 6 plugs
F18737-0000	Basket 5¼"L x 4¼"W x 4¼"H Fits electric models only; per each, 6 per case

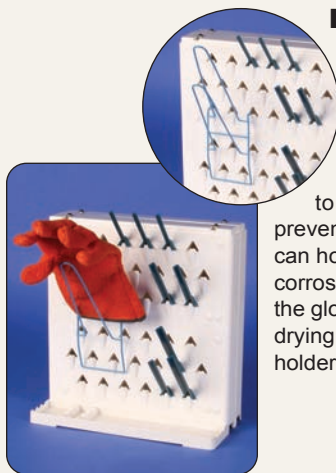


NEW PRODUCT!

Lab-Aire® II Glove Holder

Say Goodbye to Wet Gloves Forever

Realize faster drying time by placing wet laboratory gloves on the convenient Lab-Aire® II Glove Holder. This holder attaches easily to all Lab-Aire® II Dryers and keeps gloves open for external as well as internal drying. The holder helps to extend the life of gloves by maintaining their shape, preventing bending, cracking and moisture buildup. Each holder can hold one pair of gloves and is epoxy-coated for chemical and corrosion resistance. Significantly reduce drying time by attaching the glove holder to Electric Lab-Aire® II Drying Racks. The electric drying racks circulate heated air in and around the gloves. Glove holder is steam autoclavable at 121°C (250°F).



CATALOG NO.	DESCRIPTION
F18931-0000	Wire Glove Holder - Holds two gloves

Poxygrid® Labware Drain Stand

Three rows of epoxy-coated hairpin-loop supports (14 in all) hold labware with 18mm I.D. necks or larger. Top row has 12 straight pins 10.2cm (4") long to accommodate smaller items. A polystyrene tray catches water as labware drains. Rubber tipped feet provide non-skid use on a tabletop, or the stand may be wall-mounted using wire loops on the back.



CATALOG NO.

H18805-0000

DIMENSIONS (L x W x H)

43 x 17 x 48cm (16 7/8 x 6 1/2 x 19")



Round-Bottom Flask Support

Standard Use for Most Labs

Round-bottom flasks of any size up to 10 liters are cradled securely in the stepped concentric rings of this support. Racks can be stacked together for convenient storage. Polypropylene construction is not affected by spilled acids, alkalis or other corrosive liquids. Steam autoclavable at 121°C (250°F). **Per each, 6 per case.**



CATALOG NO.

F38950-0000

DIMENSIONS (DIAM. x H)

17.1 x 5.1cm (6 3/4 x 2")

NEW PRODUCT!

Poxygrid® Round Bottom Flask Carrier

The only epoxy-coated wire rack that can hold four round bottom flasks ranging in size from 100ml to 500ml. Height-adjustable polypropylene clips secure the necks for a wide variety of flasks. 25.4cm x 25.4cm footprint, 23.5cmH (10" x 10" x 9 1/4" H). Steam autoclavable at 121°C (250°F).



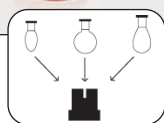
CATALOG NO.

F16951-0002

Poxygrid® Round Bottom Flask Carrier with Clips

F16951-0004

Round Bottom Flask Carrier Replacement Clips



Flaskup™ Flask Holders

Holds Round and Tapered Bottom Flasks

Made from polypropylene, these unique holders are durable and easy-to-clean. The inside wall has a slight taper to the open bottom, allowing a variety of flask shapes and sizes to fit into one holder. The wide base keeps flasks stable and side slots can be used as sight windows. Autoclavable at 121°C (250°F). **3 per package, 8 packages per case, except assortment pack.**

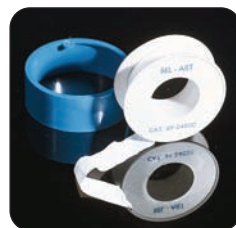


CATALOG NO.	FITS FLASK SIZE	BOTTOM SLOT	TOP SLOT	LENGTH OF SLOT
F38951-2000	10ml	4.2mm	4.9mm	21.4mm
F38951-2002	25ml	4.2mm	4.9mm	22.8mm
F38951-2004	50ml	4.2mm	4.9mm	24.2mm
F38951-2006	100ml	5.7mm	6.3mm	31.4mm
F38951-2010	250ml	5.4mm	7.8mm	44.6mm
F38951-2012	500ml	6.8mm	9.4mm	53.5mm
F38951-2008	Assortment Pack; 3 each 10, 25, 50, and 100ml flask sizes			

Fluo-Kem® Lab-Thread Tape

Lubricates and Seals without Grease or Adhesives

Pure, non-sintered Teflon® PTFE Lab-Thread Tape contains no adhesive, yet does a superior job of sealing small apertures. Conforming to irregularities of surfaces, threads and joints of all types, it eliminates the need for lubricants and vacuum greases. Provides a vacuum tight seal and eliminates "freezing" even after long periods. Can be used on ground glass joints, desiccators, bell jars, freeze-drying equipment, etc. 0.0635mm (0.0025") thick, 12.7mm (½") wide x 7.6 meters long (300") per roll. Withstands temperatures from -250°F to 500°F. **3 rolls per bag, 6 bags per case.**



CATALOG NO.

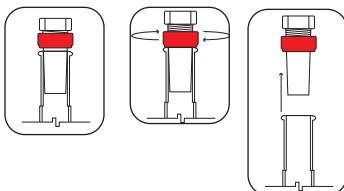
F24020-0000

Safe-Lab™ stoppers are easily removed from standard tapered glassware by turning the red extraction nut, to apply a safe, gentle and even force against the mouth of the vessel helping to eliminate accidents and breakage.

Safe-Lab™ Solid Teflon® PTFE Stoppers

Use with Boiling and Distilling Flasks

Solid Teflon® stopper with extracting nut for flasks with ground joints.
Per pack listed below.



CATALOG NO.	JOINT SIZE	PACK
F20196-1485	14/20	3
F20196-1500	19/22	3
F20196-1502	24/40	2

Safe-Lab™ Hollow Teflon® PTFE Stoppers

Use these hollow Teflon® stoppers for boiling and distilling style flasks with ground joints. Stopper comes with polypropylene extracting nut for easy removal from flask. Per pack or each as listed below.



CATALOG NO.	JOINT SIZE	PACK
F20197-1515	24/40	2
F20197-1530	29/42	2
F20197-1540	34/45	Each
F20197-1550	45/50	Each
F20197-1555	55/50	Each



Fluo-Kem® Sleeves

Micro-thin sleeves made of virgin Teflon® PTFE fit snugly on full length ground glass joints to keep them from seizing, leaking or galling. Used without lubricants or adhesives, they are chemically inert, preclude contamination, and withstand temperatures from -100°C (-148°F) to 250°C (482°F). The sleeves have a nominal thickness of .05mm (.002") and an accurate 10:1 taper. Custom sizes, special lengths and European specification sleeves available on request. **3 per pack, 12 packs of one size per case.**

TEFLON®

CATALOG NO.	JOINT SIZE
F20414-1030	10/30
F20414-1435	14/35
F20414-1922	19/22
F20414-1938	19/38
F20414-2440	24/40
F20414-2942	29/42
F20414-3445	34/45
F20414-4550	45/50
F20414-5050	50/50

Fluo-Kem® Sleeves with Grip Ring and Outer Ribs

Reusable Teflon® Sleeves

Keep standard taper glass joints from seizing, leaking or galling. No lubricant is required to make a vacuum-tight joint. The top of each sleeve has a rigid, knurled grip ring 3mm (0.1") thick for easy assembly or removal of the sleeve from a standard taper joint. Outer rings on the taper prevent sticking. Resistant to most chemicals and reusable, the sleeves are made of .2mm (.008") virgin Teflon® PTFE. Thickness at rings is .35mm (.014"). Can be subjected to temperatures from -100°C to +250°C (-148°F to +482°F). **3 per pack.**



TEFLON®

CATALOG NO.	SIZE
F20417-2440	24/40
F20417-2942	29/42
F20417-4550	45/50

NEW PRODUCTS!

Battery Powered Engraving Tool*Permanently Engraves in Seconds*

Engrave test tubes, bottles, racks, keys, equipment, tools, electronics and more. Simply hold the Engraving Tool like a pen, press the power button, apply light pressure, and 'write,' to permanently mark most materials including glass, plastic, wood, metal, bone, and stone. Cordless battery power makes it portable for use virtually anywhere indoors or out in the field. Marks will not fade if exposed to chemicals or sunlight. Operates on two 'AA' batteries; not included. Extra engraving tip included. Convenient polyethylene stand (sold separately) holds the Engraving Tool when not in use and has a safe place to keep extra tip.



CATALOG NO.

DESCRIPTION

F44150-0005

Battery Powered Engraving Tool, 7"L

F44150-0015

Engraving Tool Stand

Poly-Cone™ Universal Adapter

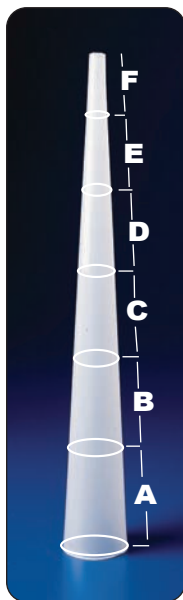
This precision-engineered adapter forms a continuous standard taper inside and out, from top to bottom. It may be cut with a fine-tooth saw or sharp knife into various adapters, such as individual bushings, stirrer bearings, thermometer and gas inlet tube supports, drip-tips, funnels, trap connectors for tubing, etc. It withstands temperatures up to 121°C (250°F).

The Poly-Cone™ adapter allows connection of two equal or unequal T joints, a T joint and a straight tube, or two straight tubes. When new and well-lubricated, it will hold a vacuum. Overall length 27cm (10 5/8").

Per each, 12 per case.

A few of the many uses:

- | | |
|--------------------|---|
| (A) 35/50 to 30/50 | (accommodates 34/45 to 29/42) |
| (B) 30/50 to 25/50 | (accommodates 29/42 to 24/40) |
| (C) 25/50 to 20/50 | (accommodates 24/40 to 19/38) |
| (D) 20/50 to 15/50 | (accommodates 19/38 to 14/35) |
| (E) 15/50 to 10/50 | (accommodates 14/35 to 10/30) |
| (F) 10/20 to 5/20 | (accommodates thermometers, glass tubing, etc.) |



CATALOG NO.

H20300-0000