

PULSAFEEDER®

The Clamp Mount Mixer provides a convenient method of attaching a mixer to a vertical surface or support such as the side wall of a tank or drum. This type of mount saves time since it requires no drilling or extra mixer supports. It also has the added advantage of being portable and can easily be transferred from one tank or drum to another.

Each mount features a rugged dual clamp design which holds the mixer securely in place (1/20 hp mixers have a single clamp support). The mount is designed with a bolt secured pivot allowing adjustment of the angle at which the mixer shaft enters the tank for increased efficiency in solution agitation. This type of mixer is available in a wide variety of motor designs (OPEN, TEAO and EXPLOSION PROOF) and voltages.

Construction

All mixers feature a 316 stainless steel shaft with an integral impeller (dual impellers standard on 48" shafts). Special epoxy and vinyl shaft coatings are available for applications where the solution being agitated is not compatible with 316 stainless steel. The shaft is coupled to the motor via a brass adapter which is held securely by four stainless steel set screws.

The clamp mount is constructed of steel and is coated with corrosion resistant paint.

Installation

Simply attach the mixer mount to a vertical surface by tightening c-clamps onto the support. The angle at which the mixer enters the tank can now be adjusted by loosening Bolt #1 and removing Bolt #2 (care should be taken to support mixer before Bolt #2 is removed). Adjust the mixer to the desired angle and replace Bolt #2 in one of the four bottom pivot points. Tighten both bolts.

Note: A clearance of at least 3" should be maintained from any tank bulkhead or tank wall and the impeller. Not recommended for mounting directly to a Polyethylene tank wall.

Features

- 316 SS Shaft
- Epoxy and Vinyl Shaft Coatings Are Available
- Shafts Cut to Length

Operating Benefits

- Clamp mount eliminates the need for additional mixer support.
- No need to drill mounting holes.
- Simple Installation.
- Portable easy to transfer.



Aftermarket

- Double Wall Containment Tanks from 15 to 500 gallons.
- 1, 2, or 4 Drum Spill Containment Pallets.
- Metering Pumps.



Clamp Mount Mixer

Clamp Mount Mixer

Specifications and Model Selection

Clamp Mount Mixer Selection Guide	
MOUNT:	C = Clamp Mount Mixer
HORSEPOWER:	M = 1/20 1 = 1/4 2 = 1/3 3 = 1/2 4 = 1
TYPE:	0 = Open Drip Proof TE = Totally Enclosed EXP = Explosion Proof
SHAFT:	H = 316 Stainless Steel
AVAILABLE OPTIONS:	WRD = 6' 3 wire 18 gauge SJ cord and plug installed at factory EPOXY = Special epoxy corrosion resistant coating for stainless steel impeller and shaft VINYL = Special vinyl corrosion resistant coating for stainless steel impeller and shaft recommended for sodium hypochlorite 230 = 230V Motor LENGTH = Length in inches represents shaft length requested Suction Tube Shield Assembly. 1" PVC tube, prevents pump suction tubing from entangling with mixer blade. 28655 = 29" - 55 gallon 28656 = 20" - 35 gallon

A completed model number should look like 'C-3-TE-H/VINYL, 36"

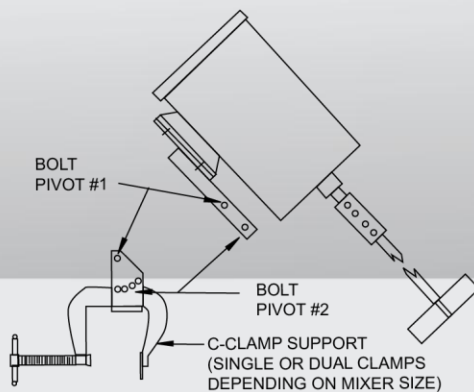
Engineering Data

Type	OPEN								TOTALLY ENCLOSED								EXPLOSION PROOF									
Shaft Length*	34		36		44		48		28		34		36		44		48		34		36		44		48	
Horsepower	1/4		1/3		1/2		1		1/20		1/4		1/3		1/2		1		1/4		1/3		1/2		1	
RPM	1725								1500		1725															
Voltage	115	250	115	230	115	230	115	230	115	115	230	115	230	115	230	115	230	115	230	115	230	115	230	115	230	
Amperage**	6.2	3.1	6.8	3.4	8.2	4.1	14.8	7.4	2.0	5.2	2.6	6.8	3.4	9.6	4.8	13.6	6.8	4.5	2.3	6.8	3.4	9.0	4.5	13.6	6.8	
Motor Design	<div>- split phase - sleeve bearings 1 HP motors - capacitor start</div>								<div>1/20 HP Motors - ball bearing - shaded pole - totally enclosed air open</div>								<div>- split phase - ball bearing - non ventilated</div>									
<div>All Other Motors - ball bearing - automatic overload - capacitor start - fan cooled</div>									<div>1 HP Motors - automatic overload - capacitor start - fan cooled</div>																	

* Shafts may be cut to desired length. 44" and 48" shafts feature dual impellers.

** 50 Hz models available, consult factory.

Mount Detail



novatech
INTERNATIONAL

sales@novatech-usa.com
www.novatech-usa.com
Tel: (866) 433-6682 Fax: (866) 433-6684
Tel: (281) 359-8538 Fax: (281) 359-0084

PULSAFEEDER

27101 Airport Road
Punta Gorda, FL 33982
Phone: ++1(941) 575-3800
Fax: ++1(941) 575-4085

CMM001 I14

IPX
FLUID & METERING