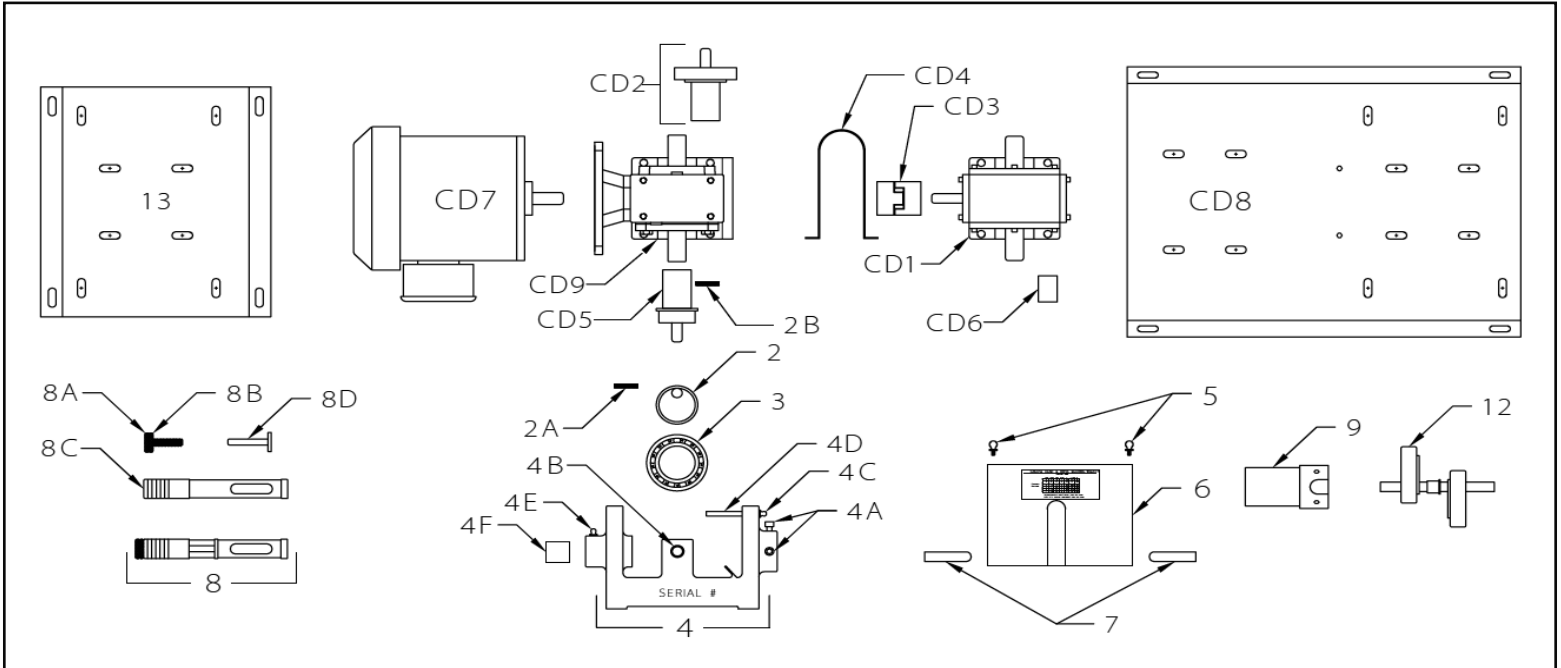


## V-10 & V-5 DRIVE ASSEMBLIES



| ITEM | PART #   | DESCRIPTION                                   |
|------|----------|---|
| 2    | 1101     | DRIVE BEARING SUPPORT CAM                     |
| 2A   | 1101-1   | 3/16 X 1 ROLLED DRIVE PIN (FOR 1101)          |
| 2B   | 1101-2   | 3/16 X 1 1/4 ROLLED DRIVE PIN (FOR 3L09CD)    |
| 3    | 3L09     | SEALED DRIVE BEARING                          |
| 4    | 008-2    | RIGHT HAND BASE CASTING (STANDARD)            |
|      | 008-2D   | INSIDE CASTING ON DUPLEX ASSEMBLY             |
|      | 008-2L   | LEFT HAND BASE CASTING (V-10 DUPLEX)          |
|      | 008-2DL  | INSIDE CASTING ON LEFT HAND DUPLEX ASSEMBLY   |
| 4A   | 008-4    | 1/4-20 X 5/8" ALLEN CAP SCREW (2 REQUIRED)    |
| 4B   | 008-5    | 5/8" OD X 1/2" ID X 1/2" LONG OILITE BEARING  |
|      | 008-6    | 5/8" OD X .485" ID X 1/2" LONG OILITE BEARING |
| 4C   | 006-2    | DRIVE BEARING GREASE FITTING                  |
| 4D   | 006-3    | GREASE TUBE                                   |
| 4E   | 006-2    | SLIDE BUSHING GREASE FITTING                  |
| 4F   | 008-10   | 1 1/8" X 1" X 1" OILITE BEARING (2 REQUIRED)  |
| 5    | 1102-1   | COVER SCREW (2 REQUIRED)                      |
| 6    | 1102     | CLEAR PLASTIC COVER (STANDARD)                |
|      | 1102-D   | CLEAR PLASTIC COVER (LEFT HAND)               |
|      | 1102-GC  | STAINLESS STEEL GASKETED COVER                |
| 7    | 1102-2   | COVER CLIP (2 REQUIRED)                       |
| 8    | A-1097-1 | SIMPLEX OR DUPLEX SLIDE ASSEMBLY              |
| 8A   | 1100     | SLIDE ADJUSTMENT SCREW                        |
| 8B   | 1099     | ADJUSTMENT SCREW LOCKNUT                      |
| 8C   | A-1097   | SIMPLEX OR DUPLEX SLIDE                       |
| 8D   | 1098     | SLIDE PIN                                     |
| 9    | SLSD     | SPRING LOADED SLIDE DEVICE                    |
| 12   | 009      | DUPLEX DRIVE SHAFT ASSEMBLY                   |
|      | 009-H    | HYDRAULIC DUPLEX DRIVE SHAFT ASSEMBLY         |
| 13   | FBP      | V-10 SIMPLEX & DUPLEX BASE PLATE              |

| ITEM | PART #       | DESCRIPTION                                   |
|------|--------------|---|
| CD1  | 192A02-20:1  | 90 RPM COUPLING DRIVE SPEED REDUCER           |
|      | 192A02-25:1  | 60 RPM COUPLING DRIVE SPEED REDUCER           |
|      | 192A02-50:1  | 30 RPM COUPLING DRIVE SPEED REDUCER           |
|      | 192A02-100:1 | 18 RPM COUPLING DRIVE SPEED REDUCER           |
| CD2  | 3L09 CD      | DRIVE BEARING ASSEMBLY FOR 7/8" SHAFT         |
| CD3  | L075         | 5/8" X 5/8" LOVEJOY FLEXIBLE COUPLING SET     |
| CD4  | FCG          | COUPLING GUARD                                |
| CD5  | VAS-CD       | OUTPUT COUPLING & CAM ASSEMBLY FOR 7/8" SHAFT |
|      | VAS-CD-D     | 7/8" X 1/2" COUPLING FOR TRIPLEX OR QUAD      |
| CD6  | MS           | MOTOR SPACER FOR COUPLING DRIVE (4 REQUIRED)  |
| CD7  | MO-3         | 1PH 120/240 VAC 60HZ 1/2 HP EPFC 56 FRAME     |
|      | MO-4         | 90 VDC 1/2 HP TEFC 56/56C FRAME               |
|      | MO-6         | 3PH 230/460 VAC 60HZ 1/2 HP EPFC 56 FRAME     |
|      | MO-7         | 3PH 230/460 VAC 60HZ 1/2 HP TEFC 56 FRAME     |
|      | MO-8         | 1PH 120/240 VAC 60HZ 1/2 HP TEFC 56 FRAME     |
|      | MO-12        | 1PH 120/240 VAC 60HZ 1/3 HP TEFC 56C FRAME    |
|      | MO-12V       | 1PH 120/240 VAC 60HZ 1/2 HP TEFC 56C FRAME    |
|      | MO-13        | 1PH 120/230 VAC 60HZ 1/2 HP EPFC 56C FRAME    |
|      | MO-14        | 90 VDC 1/4 HP TEFC 56C FRAME                  |
|      | MO-14V       | 90 VDC 1/2 HP TEFC 56/56C FRAME               |
|      | MO-15        | 3PH 230/460 VAC 60HZ 1/3 HP TEFC 56C FRAME    |
|      | MO-15V       | 3PH 230/460 VAC 60HZ 1/2 HP TEFC 56C FRAME    |
|      | MO-16        | 3PH 240/480 VAC 60HZ 1/2 HP EPFC 56C FRAME    |
|      | MO-17        | 3PH 575 VAC 60HZ 1/3 HP TEFC 56C FRAME        |
|      | MO-18        | 1PH 115/230 VAC 50/60HZ 1/2 HP TEFC 56C FRAME |
|      | MO-19        | 3PH 230/460 VAC 1/2 HP TENV INVERTER DUTY 56C |
|      | MO-20        | 1PH 120/240 VAC 60HZ 1/2 HP SEVERE DUTY 56C   |
| CD8  | BP-CD        | COUPLING DRIVE BASE PLATE                     |
| CD9  | FMSR-60      | 60 RPM 56C FLANGED SPEED REDUCER              |
|      | FMSR-30      | 30 RPM 56C FLANGED SPEED REDUCER              |
|      | FMSR-18      | 18 RPM 56C FLANGED SPEED REDUCER              |
|      | FMSR-12      | 12 RPM 56C FLANGED SPEED REDUCER              |
|      | FMSR-6       | 6 RPM 56C FLANGED SPEED REDUCER               |

## **WARRANTY ON EQUIPMENT SUPPLIED BY A&F MACHINE PRODUCTS COMPANY**

A&F Machine Products Company (A&F) warrants the components and workmanship of its products under normal use and service for a period of one year from date of shipment. All obligations and liabilities assumed under this warranty are limited to the repair or replacement, at our option, FOB A&F, of defective units that are returned. Improper use, application, or service voids all warranties. In any event, A&F shall not be liable for indirect or consequential damages arising out of the use of this equipment.

Warranty on equipment and accessories furnished by A&F, but not manufactured by A&F, shall be limited to the warranty of the respective equipment or accessory manufacturer for such units. In any event, A&F shall not be liable for indirect or consequential damages arising out of the provision or use of this equipment or accessory.

### **Shipping is FOB A&F Machine Products Co. in Berea, Ohio**

#### **FEDEX GROUND AND FEDEX AIR**

MOST ORDERS LESS THAN 90# WILL BE SHIPPED VIA FEDEX GROUND, OR AIR IF SPECIFIED. WE DO NOT USE UPS. WE WILL SHIP PREPAY AND ADD UNLESS YOU SUPPLY A FEDEX ACCOUNT NUMBER. ORDERS OVER 90# WILL BE SHIPPED BY MOTOR FREIGHT.

#### **MOTOR FREIGHT**

ORDERS SHIPPED BY MOTOR FREIGHT ARE SHIPPED COLLECT OR BILLED TO A THIRD PARTY. PLEASE SPECIFY ON YOUR ORDER ANY PREFERENCE IN CARRIERS. ANY ORDER SHIPPED "PREPAID & ADD" WILL BE SUBJECT TO A \$30 HANDLING FEE.

#### **EXPEDITE FEE**

ALL PUMPS ARE CUSTOM BUILT PER ORDER. NORMALLY PUMP AND PACKAGED SYSTEM ORDERS ARE SHIPPED WITHIN 2 TO 3 DAYS AFTER RECEIPT OF THE ORDER. PUMP ORDERS REQUESTING SAME DAY OR NEXT DAY SHIPPING WILL BE HANDLED ON A FIRST COME FIRST SERVE BASIS AND WILL BE SUBJECT TO AN EXPEDITE FEE OF 25% OF THE INVOICE TOTAL. MOST PARTS ORDERS ARE SHIPPED FROM STOCK THE SAME DAY THEY ARE ORDERED. THERE IS A \$25 MINIMUM ON PARTS ORDERS.

#### **RETURNS**

EQUIPMENT THAT IS RETURNED FOR CREDIT IS SUBJECT TO INSPECTION BEFORE ANY CREDIT WILL BE ISSUED. GENERALLY, NEW AND UNUSED CATALOG ITEMS RECEIVED BACK AT A&F IN NEW AND UNUSED CONDITION IN IT'S ORIGINAL PACKAGING WILL BE SUBJECT TO A 15% RESTOCKING FEE. DAMAGED OR INCOMPLETE EQUIPMENT WILL BE CREDITED ACCORDINGLY. SPECIAL ORDER ITEMS OR ITEMS NOT LISTED IN THE CATALOG MAY NOT BE ELIGIBLE FOR CREDIT. ITEMS OR EQUIPMENT RETURNED FOR CREDIT MUST BE RETURNED FREIGHT PREPAID OR THEY WILL NOT BE ACCEPTED.



[sales@novatech-usa.com](mailto:sales@novatech-usa.com)

[www.novatech-usa.com](http://www.novatech-usa.com)

Tel: (866) 433-6682

Fax: (866) 433-6684

Tel: (281) 359-8538

Fax: (281) 359-0084