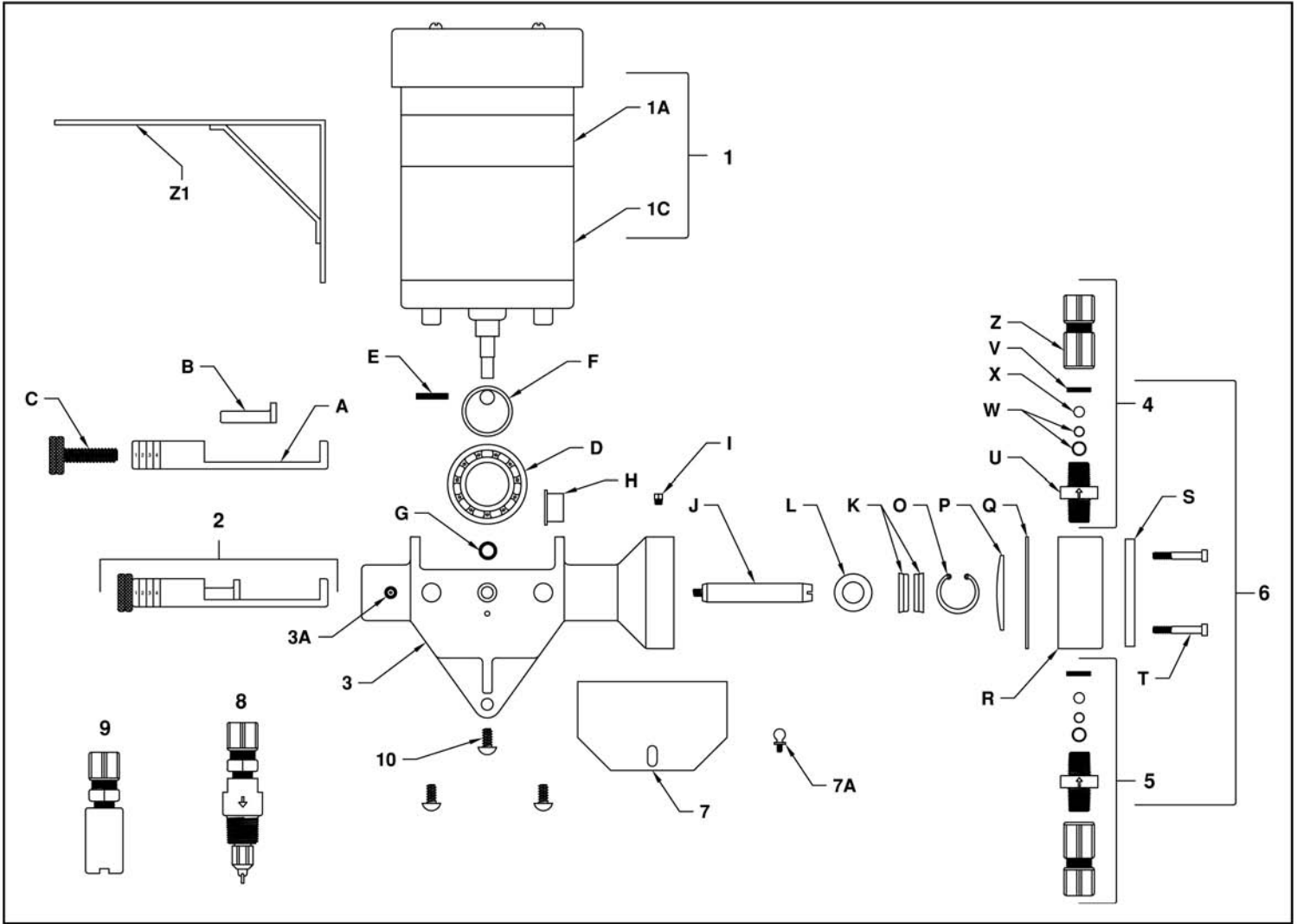


# V-6 PUMP PARTS



ITEM	PART #	DESCRIPTION
1	VW-2	120 VAC 1PH 1/20TH HP 2 RPM GEAR MOTOR
	VW-6	120 VAC 1PH 1/20TH HP 6 RPM GEAR MOTOR
	VW-12	120 VAC 1PH 1/12TH HP 12 RPM GEAR MOTOR
	VW-30	120 VAC 1PH 1/12TH HP 30 RPM GEAR MOTOR
	VW-60	120 VAC 1PH 1/12TH HP 60 RPM GEAR MOTOR
1A	6K151	REPLACEMENT VW MOTOR (SPECIFY GEAR HEAD RPM)
1C	1C-2	2 RPM VW GEAR HEAD ASSEMBLY
	1C-6	6 RPM VW GEAR HEAD ASSEMBLY
	1C-12	12 RPM VW GEAR HEAD ASSEMBLY
	1C-30	30 RPM VW GEAR HEAD ASSEMBLY
	1C-60	60 RPM VW GEAR HEAD ASSEMBLY
2	097	SLIDE ARM ASSEMBLY
3	08	V-6 PUMP CASTING
3A	006-2	SLIDE GREASE FITTING
4*	02DH	POLYETHYLENE DISCHARGE CHECK VALVE ASSEMBLY
	02D-S	303SS DISCHARGE CHECK VALVE ASSEMBLY
5*	02SH	POLYETHYLENE SUCTION CHECK VALVE ASSEMBLY
	02S-S	303SS SUCTION CHECK VALVE ASSEMBLY
6	1025	POLYETHYLENE PUMP HEAD ASSEMBLY W/CHECKS
	1025 SS	303SS PUMP HEAD ASSEMBLY W/CHECKS
7	102	PLASTIC COVER
	102 GC	SS GASKETED COVER
7A	1102-1	COVER SCREW
8	8	POLYETHYLENE INJECTION NOZZLE
9	9	POLYETHYLENE FOOT VALVE
10	08-4	1/4-20 BUTTON HEAD SCREW (3 REQUIRED)

ITEM	PART #	DESCRIPTION
A	090	SLIDE
B	098	SLIDE PIN
C	099	STROKE ADJUSTMENT SCREW & LOCKNUT
D	3L06	DRIVE BEARING
E	101-1	1/8" X 1" ROLLED PIN
F	101	DRIVE BEARING SUPPORT CAM
G	312	OILITE SUPPORT BUSHING
H	500	OILITE PISTON BUSHING
I	0006-2	1/8" NPT OIL RESERVOIR PIPE PLUG
J	07	V-6 HARDENED STEEL PISTON
K	12	V-6 PACKING SET
L	13	PACKING RETAINER WASHER
O	16	SNAP RING
P	30	V-6 DIAPHRAGM SCREEN
Q*	26	TEFLON DIAPHRAGM
R	25	POLYETHYLENE HEAD
	25 SS	303SS HEAD
	25 S6	316SS HEAD
S	29	CLAMP PLATE FOR POLYETHYLENE HEAD
T	27	PUMP HEAD BOLT (4 REQUIRED)
U	02	POLYETHYLENE CHECK VALVE BODY
V	02-8	BALL CHECK RETAINING PIN
W	28	VITON "O" RING SEAT
X	002-9	3/8" DIAMETER CERAMIC BALL CHECK
Z	50-9	3/8" NPT X 3/8" OD POLY TUBING FITTING
	50-9 SS	3/8" NPT X 3/8" OD 316SS TUBING FITTING
Z1	Z1	MINI-PUMP WALL BRACKET

**RECOMMENDED SPARE PARTS**

## **WARRANTY ON EQUIPMENT SUPPLIED BY A&F MACHINE PRODUCTS COMPANY**

A&F Machine Products Company (A&F) warrants the components and workmanship of its products under normal use and service for a period of one year from date of shipment. All obligations and liabilities assumed under this warranty are limited to the repair or replacement, at our option, FOB A&F, of defective units that are returned. Improper use, application, or service voids all warranties. In any event, A&F shall not be liable for indirect or consequential damages arising out of the use of this equipment.

Warranty on equipment and accessories furnished by A&F, but not manufactured by A&F, shall be limited to the warranty of the respective equipment or accessory manufacturer for such units. In any event, A&F shall not be liable for indirect or consequential damages arising out of the provision or use of this equipment or accessory.

### **Shipping is FOB A&F Machine Products Co. in Berea, Ohio**

#### **FEDEX GROUND AND FEDEX AIR**

MOST ORDERS LESS THAN 90# WILL BE SHIPPED VIA FEDEX GROUND, OR AIR IF SPECIFIED. WE DO NOT USE UPS. WE WILL SHIP PREPAY AND ADD UNLESS YOU SUPPLY A FEDEX ACCOUNT NUMBER. ORDERS OVER 90# WILL BE SHIPPED BY MOTOR FREIGHT.

#### **MOTOR FREIGHT**

ORDERS SHIPPED BY MOTOR FREIGHT ARE SHIPPED COLLECT OR BILLED TO A THIRD PARTY. PLEASE SPECIFY ON YOUR ORDER ANY PREFERENCE IN CARRIERS. ANY ORDER SHIPPED "PREPAID & ADD" WILL BE SUBJECT TO A \$30 HANDLING FEE.

#### **EXPEDITE FEE**

ALL PUMPS ARE CUSTOM BUILT PER ORDER. NORMALLY PUMP AND PACKAGED SYSTEM ORDERS ARE SHIPPED WITHIN 2 TO 3 DAYS AFTER RECEIPT OF THE ORDER. PUMP ORDERS REQUESTING SAME DAY OR NEXT DAY SHIPPING WILL BE HANDLED ON A FIRST COME FIRST SERVE BASIS AND WILL BE SUBJECT TO AN EXPEDITE FEE OF 25% OF THE INVOICE TOTAL. MOST PARTS ORDERS ARE SHIPPED FROM STOCK THE SAME DAY THEY ARE ORDERED. THERE IS A \$25 MINIMUM ON PARTS ORDERS.

#### **RETURNS**

EQUIPMENT THAT IS RETURNED FOR CREDIT IS SUBJECT TO INSPECTION BEFORE ANY CREDIT WILL BE ISSUED. GENERALLY, NEW AND UNUSED CATALOG ITEMS RECEIVED BACK AT A&F IN NEW AND UNUSED CONDITION IN IT'S ORIGINAL PACKAGING WILL BE SUBJECT TO A 15% RESTOCKING FEE. DAMAGED OR INCOMPLETE EQUIPMENT WILL BE CREDITED ACCORDINGLY. SPECIAL ORDER ITEMS OR ITEMS NOT LISTED IN THE CATALOG MAY NOT BE ELIGIBLE FOR CREDIT. ITEMS OR EQUIPMENT RETURNED FOR CREDIT MUST BE RETURNED FREIGHT PREPAID OR THEY WILL NOT BE ACCEPTED.



[sales@novatech-usa.com](mailto:sales@novatech-usa.com)

[www.novatech-usa.com](http://www.novatech-usa.com)

Tel: (866) 433-6682

Fax: (866) 433-6684

Tel: (281) 359-8538

Fax: (281) 359-0084