



Griffco Valve Inc.
 188 Creekside Dr
 Amherst, NY 14228 USA
 Phone: +1 716 835-0891
 Fax: +1 716 835-0893
sales@griffcovalve.com
www.griffcovalve.com

G-SERIES BACK PRESSURE VALVES

Features:

- Molded Noryl Top
- High Reliability/Low Cost
- Molded PTFE/EPDM Diaphragm
- Adjustable Relief Settings
- Optional Pressure Rated Valves
- Anti-Siphon Function
- Robust, Machined Construction
- Tamper Resistant Adjustment Screw
- Wide Range of Materials

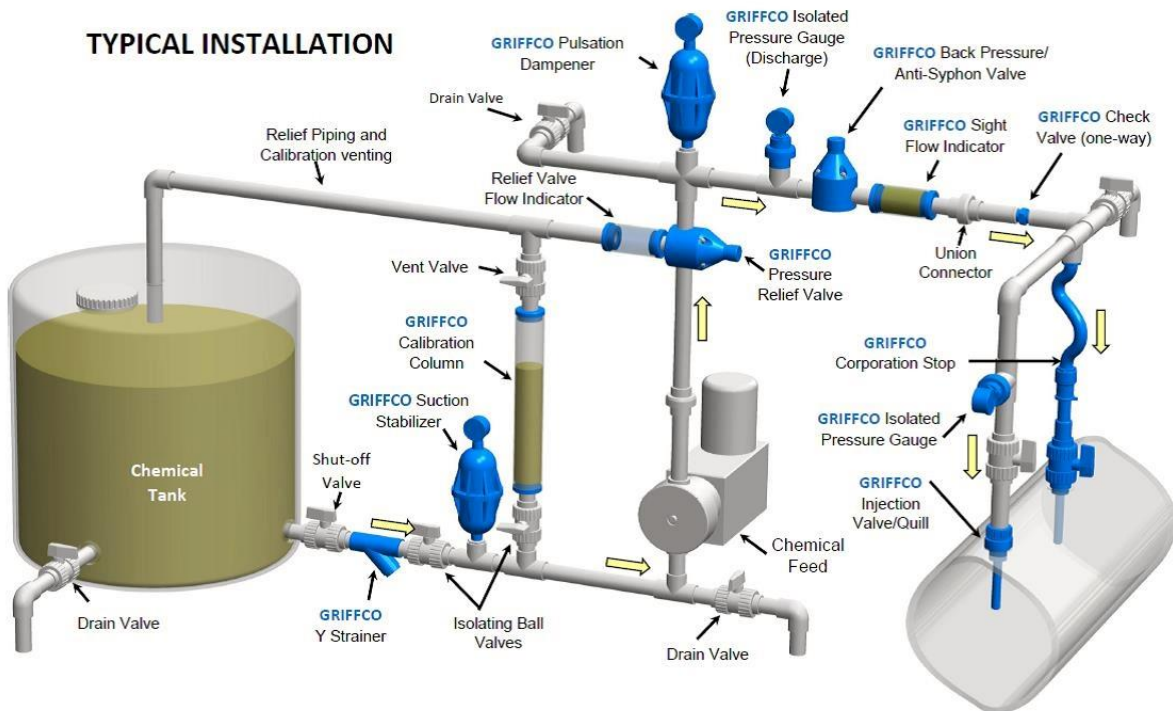
Operation:

Griffco diaphragm back pressure valves apply positive discharge pressure to a metering pump system to prevent siphoning and eliminate varying dosage rates caused by fluctuating downstream pressure. The diaphragm is held against the valve seat by an internal spring. When the preset pressure is exceeded, the diaphragm is forced up and chemical flows through the valve to the injection point. The valves are preset for 50 psi, however they are field adjustable from 10 - 150 psi via the adjustment screw. Installation should be as close to the injection point as possible to prevent chemical line drainage and it is most important that all chemical system equipment such as pulsation dampeners and pressure gauges are between the pump and back pressure valve.



Griffco G-Series diaphragm back pressure valves are designed to enhance the performance of chemical feed systems by applying a continuous back pressure to the chemical feed pump, while also acting as an anti-syphon valve. Robust construction ensures reliability in the rigorous service of municipal and industrial applications. Wetted materials include: **PVC, CPVC, PP, PVDF, PTFE, Halar, 316 SS, A20 and Hast. C.** Available sizes: 1/2" - 4".

TYPICAL INSTALLATION



CALL 1 - 800 - GRIFFCO

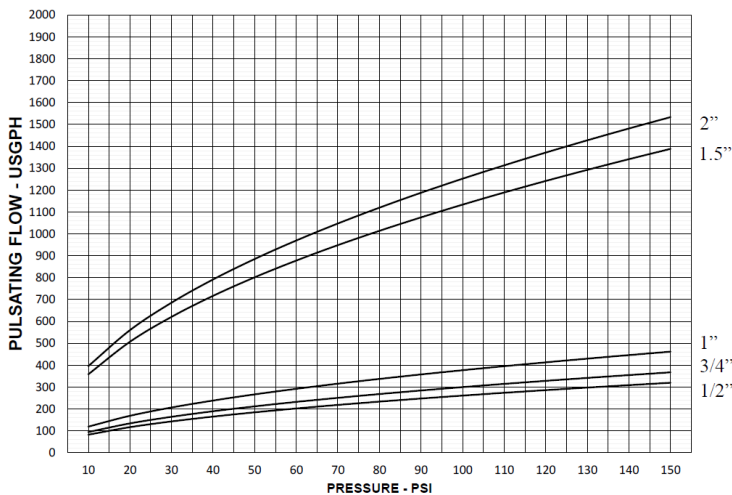
Bulletin # BPG1003-2017-01

Technical Data:

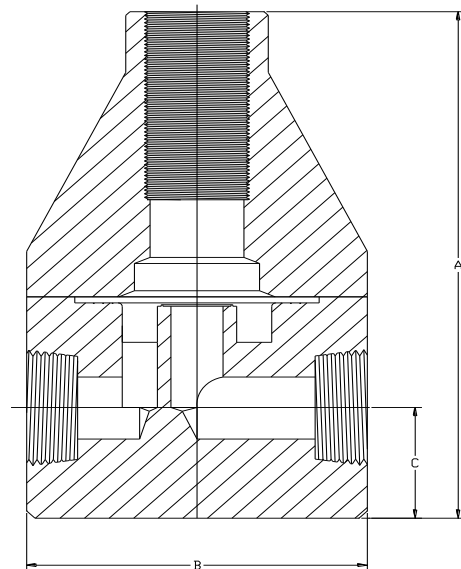
Model BPG Sizes			1/2", 3/4", 1", 1 1/2", 2", 3", 4"		
Connections:			NPT, Socket, Union, Flange		
Pressure Adjustment			Standard: 10 - 150 psi; Optional: 0 - 50 psi, 10 - 250 psi, 50 - 350 psi *Note: Size 1 1/2" and Larger BPG valves 10 - 250 psi Max range ONLY.		
Flow Rates @ 150 psi			Shipping Weight: lbs		
Size	Pulsating	Continuous	Plastic	Metal / Plastic Top	Metal / Metal Top
1/2"	320 USgph	16.7 USgpm	3.0	5.5	6.5
3/4"	367 USgph	19.2 USgpm	3.0	5.5	6.5
1"	462 USgph	24.2 USgpm	3.5	6.0	7.0
1 1/2"	1388 USgph	72.7 USgpm	9.0	18.5	26.0
2"	1533 USgph	80.3 USgpm	9.0	20.0	30.0
3"	5157 USgph	270 USgpm	28.0		
4"	5157 USgph	270 USgpm	30.0		
Max Temperature: (°F)			PVC: 140° ; CPVC & PP: 195°; PTFE, PVDF & Metal: 300°, (Peak 390°)		
Max Operating Pressure(psi) @ 70 Deg. F			Plastic/Noryl: 375 psi		Metal/Metal: 2000 psi
Materials of Construction:					
Diaphragm			PTFE / EPDM, Optional: Viton, Hypalon, & PTFE / Viton		
Valve Top			Standard: 1/2" - 2" Noryl 3" & 4" PVC Optional: 316 SS		
Valve Body			PVC, CPVC, PP, PTFE, PVDF, Halar, 316 SS, A 20, Hast. C		

Performance Curves: (3" & 4" curves on request)

Performance Curves - Pulsating Flow



Dimensions:



Product Codes For Ordering Back Pressure Valves:

BPG
 1 2 3 4

1 = Size 050 - 1/2" 075 - 3/4" 100 - 1" 155 - 1 1/2" 200 - 2" 300 - 3" 400 - 4"
2 = Material P - PVC CP - CPVC PP - Polypro T - PTFE K - PVDF H - Halar S - 316 SS A - Alloy 20 C - Hastelloy C
3 = Spring Opt Blank - 10-150 psi 1 - 0 - 50 psi 2 - 10 - 250 psi
For 50-350 psi spring use option code "MSS"
4 = Options Blank- NPT, PTFE/EPDM V - Viton Diaphragm TV - PTFE/Viton Diaph. S - Socket Connection F - Flange Connection U - Union Connection OSS - 316 SS Top MSS - 50 - 350 psi AR - Priming Valve 90 - 90° Configuration

DIMENSIONS: BPG - Series

All Materials (See Note below for 4" PVC & CPVC)

Size	A (in.)	B (in.)	C (in.)	Orifice (in.)
1/2"	5.560	3.500	1.125	0.375
3/4"	5.560	3.500	1.125	0.375
1"	5.860	3.500	1.250	0.437
1.5"	8.350	4.90	1.825	0.750
2"	8.900	4.90	2.150	0.875
3" *	11.25	15.0 *	3.0	1.500
4" ***	11.25	15.0 **	3.0	1.500

* Note 3" & 4" are flanged only ** B Dim on 4" PVC & CPVC is 17"

Note: Option MSS only for use with 316SS, A20 & Hast C. valves.

Email: sales@griffcovalve.com

Website: www.griffcovalve.com