

TOP VALVE^{*PAT}

Back Pressure & Pressure Relief Valves

Designed to Enhance the **ACCURACY** and **SAFETY** of Metering Pumps



- Long life diaphragm
- Range to 350 PSIG
- Built-in air release and optional gauge port
- Available in PVC, CPVC, PVDF, polypropylene, PTFE, stainless steel, Alloy 20 and Hastelloy C
- 7 sizes (1/4" - 2" threaded, flanged or socket)
- Color coded handles indicate size at a glance
- High temperature valves available to (300°F/149°C)
- High pressure metallic valves available to 350 psig
- High pressure thermoplastic valves available to 230 psig



**PRIMARY FLUID
SYSTEMS INC.**

Call Toll Free 1-800-776-6580
Tel (905) 333-8743 Fax (905) 333-8746

E-Mail: primary@primaryfluid.com
www.primaryfluid.com

TOP VALVE^{*PAT}

For detailed product information visit our website:
primaryfluid.com

Back Pressure/Anti-Siphon and Pressure Relief Valves

Standard Valve Series: (threaded, socket and flanged)

This series incorporates:

- Polycarbonate molded top on all models
- Available in 7 sizes 1/4" to 2" NPT or BSPT
- 8 materials including PVC, CPVC, polypropylene, PVDF, PTFE, stainless steel, Alloy 20 & Hastelloy C
- **Back pressure (anti-siphon) valve** is a two port flow through design, factory set at 50 PSIG (field adjustable 15-150 PSIG)
- **Pressure relief valve** is a three port flow through design factory set at 50 PSIG (field adjustable 15-150 PSIG)
- **Pressure relief valve** is also available in a two port, off line style (model P2)
- Standard diaphragm is PTFE laminated and EPDM backed (3 year warranty); optional materials available
- Optional higher pressure rated (232 PSIG/16 BAR) PVC, CPVC (Corzan) and PVDF valves available
- Locking pressure adjustable handle standard
- Gauge port option
- Other optional materials available for molded top

Note: CRN available on a variety of valves. Please contact us for price and availability.

Flanged Valve Series: (Plastic)



This series incorporates 150# socket-welded flanges on PVC and CPVC valves and threaded 150# companion flanges on polypropylene, PVDF and PTFE valves.

Flange sizes from 1/4" to 2" available.

Flanged Valve Series: (Metallic valve bodies)



This series incorporates 150# weld neck flanges on all metallic valve bodies. Valve top material available in PVC, CPVC (Corzan).

These flanged valves are also available in the High Temperature and High Pressure Series.

Flanged Valve Series: (All Metallic)



This series incorporates either an aluminum or 316 stainless steel top on a metallic body constructed of 316L, Alloy 20, Hastelloy C or titanium.

These flanged valves are also available in the High Temperature and High Pressure Series.

Back Pressure/Anti-Siphon and Pressure Relief Valves

High Pressure Series (only available with metallic body)



- pressure range 50 to 350 PSIG
- this series incorporates a standard aluminum metallic top, viton diaphragm, high pressure spring with three standard choices of metallic wetted bottom
- standard body materials available are 316L stainless steel, Alloy 20 or Hastelloy C; other metallic bodies available on request
- standard metallic top is aluminum with optional 316L stainless material available
- valve is available in three styles: BH back pressure 2 port design; PH pressure relief 3 port in-line design; P2H pressure relief off-line design
- valves available in various configurations that include threaded, socket and flanged

Mid-Range Series (only available with thermoplastic body)

- 20 - 230 psig range
- Available in PVC, CPVC, PP, and PVDF

High Temperature Series (for applications above 140°F/ 60°C)

- temperature limit of this valve is dependent on body material selection to a maximum of 300°F (149°C)
- this series incorporates a standard aluminum metallic top, viton diaphragm, high pressure spring with three standard choices of metallic wetted bottom
- standard body materials available are 316L stainless steel, Alloy 20 or Hastelloy C, all rated to the maximum temperature; other metallic bodies available on request
- optional body materials available are CPVC (Corzan) and PVDF; these have limited pressure versus temperature ratings and the factory should be consulted to ensure proper selection
- standard diaphragm material is Viton with optional materials available
- standard metallic top is aluminum with optional 316L stainless steel available
- valve is available in three styles: BH back pressure 2 port design; PH pressure relief 3 port in-line design; P2H pressure relief off-line design
- valves available in various configurations that include threaded, socket and flanged

Top Valve Optional Extras (applies to all valves)



- gauge port
- various types of dry or liquid filled gauges
- gauge guards in various materials
- contact factory for pricing on options (sales@primaryfluid.com)

NOTE: CRN available on a variety of valves. Please contact us for price and availability.

Back Pressure/Anti-Siphon and Pressure Relief Valves

Description

This line of diaphragm style, back pressure/anti-siphon and pressure relief valves features a completely adjustable pressure range to 350 PSIG and a built-in air release to reduce priming difficulties. The valves are available in sizes from 1/4" through 2", eight materials of construction, offer a three year warranty and are available with socket weld, flanged or special threaded connections. High temperature to (300°F/149°C) valves are available. *CRN certification available. Please contact factory.*

Ordering Information e.g. Part # TVBP50-S/S-V-S

TV - B - P - 50 - S/S - V - S

TOP VALVE

Valve Type:
B = Backpressure
P = Pressure Relief (3 port)
P2 = Pressure Relief (2 port)

Valve Style or Connection:
P = Backpressure, FNPT thread
R = Pressure Relief, FNPT thr'd (3 port)
FW = Welded Flange
FT = Thread Companion Flanged
F = Flanged Non-Metallic
S = Socket
B = BSP thread
T = High Temperature (300°F/149°C)
H = High Pressure (to 350 psig) Metallic Bodies
M = Mid-Range Pressure (to 230 psig) Thermoplastic Bodies
U = Union Type Connection

Valve Port Connection Size:

25 = 1/4"	10 = 1"
45 = 1/4" X 1/2"	15 = 1 1/2"
50 = 1/2"	20 = 2"
75 = 3/4"	

Top Options:
Polycarbonate Top Standard
C = CPVC Top (CRN only)
P = PVC Top (**optional 1.5"+**)
A = Aluminum Top
S = 316L S/S Top
XXX = Custom spring range

Miscellaneous Options:
E = EPDM Diaphragm
V = Viton Diaphragm
G = Gauge Port

Body Material of Construction:
PVC = polyvinylchloride
CPVC = Corzan
PP = polypropylene
TFE = 24% glass filled PTFE
PVDF = polyvinylfluoride
S/S = 316L Stainless Steel
ALL20 = Alloy 20
Hast = Hastelloy C 276

Flow Rates

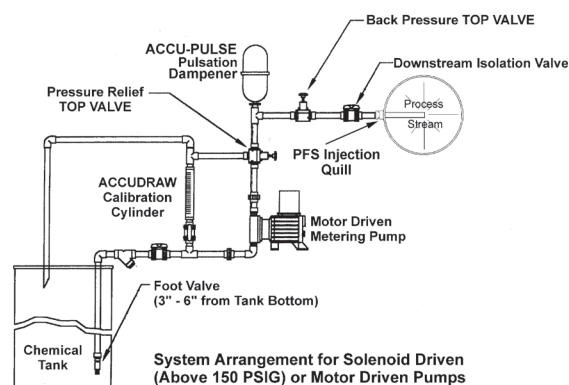
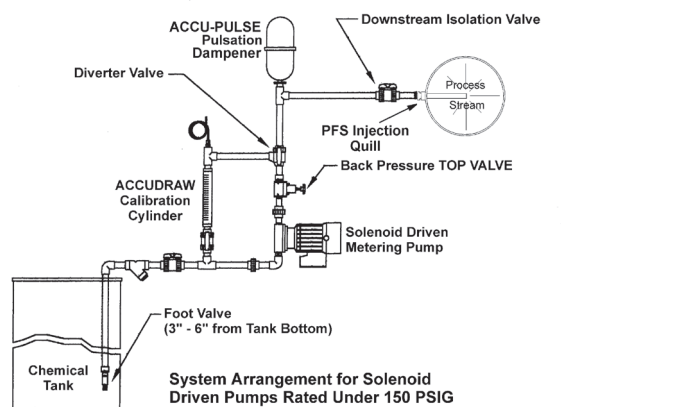
Flow capacity through TOP VALVE back pressure/anti-siphon and pressure relief valves under continuous flow conditions @ **50 PSIG** with ambient temperature water.

Size	1/4"	1/4" / 1/2"	1/2"	3/4"	1"	1 1/2"	2"
Flow rate USGPM	4	4	6	8	14	25	40

Note: Capacities will increase with pressure. If pressure is doubled, flow rate will approximately double. For capacities of valves with pulsating flow, use approximately 1/3 of the given flow rates.

Typical Installations

The installations below are typical installation examples only. Consult your engineering department for the appropriate installation of your application or call Primary Fluid Systems Inc. for advice.



Distributed By:

novatech
INTERNATIONAL

sales@novatech-usa.com
www.novatech-usa.com
Tel: (866) 433-6682 Fax: (866) 433-6684
Tel: (281) 359-8538 Fax: (281) 359-0084



PRIMARY FLUID
SYSTEMS INC.

Call Toll Free 1-800-776-6580

Tel: (905) 333-8743

Fax: (905) 333-8746

E-mail: primary@primaryfluid.com
www.primaryfluid.com